

ITEM NO.	TO BE CONSTRUCTED	CONTRACT QUANTITY
157006M	MONUMENT	6 U.
202021P	REMOVAL OF PAVEMENT	1849 S.Y.
302042P	DENSE-GRADED AGGREGATE BASE COURSE, 8" THICK	2754 S.Y.
401009P	HMA MILLING, 3" OR LESS	6816 S.Y.
401021M	HOT MIX ASPHALT PAVEMENT REPAIR	1364 S.Y.
401030M	TACK COAT	312 GAL.
401036M	PRIME COAT	72 GAL.
401042M	HOT MIX ASPHALT 9.5 M 64 SURFACE COURSE	1035 TON
401096M	HOT MIX ASPHALT 19 M 64 BASE COURSE	949 TON
513017P	LANDSCAPE WALL	441 S.F.
605193P	HANDRAIL	99 L.F.
606012P	CONCRETE SIDEWALK, 4" THICK	1127 S.Y.

ITEM NO.	TO BE CONSTRUCTED	CONTRACT QUANTITY
606039P	HOT MIX ASPHALT DRIVEWAY, 6" THICK	742 S.Y.
606051P	CONCRETE DRIVEWAY, 6" THICK	168 S.Y.
606084P	DETECTABLE WARNING SURFACE	38 S.Y.
606109P	CONCRETE STEPS, REINFORCED	6 C.Y.
607032P	9" X 16" CONCRETE VERTICAL CURB WITH GUTTER	3266 L.F.
802021M	TREE REMOVAL OVER 6" TO 12" DIAMETER	11 U.
802024M	TREE REMOVAL OVER 12" TO 18" DIAMETER	9 U.
804009P	TOPSOILING, 6" THICK	140 S.Y.
806006P	FERTILIZING AND SEEDING, TYPE A-3	140 S.Y.
809003M	STRAW MULCHING	140 S.Y.
811150M	LANDSCAPE ACCENT WALL	431 S.F.

NOTES:  
 1. SEE CONSTRUCTION DETAILS FOR STAIR, LANDSCAPE WALL AND LANDSCAPE ACCENT WALL DETAILS.  
 2. BETWEEN STA. 27+00 AND STA. 30+50 TRIM ALL TREE BRANCHES THAT ARE WITHIN 10 FEET OF THE PROPOSED CURB.

**PLAN**  
 1 INCH = 30 FT.

**wsp**

MICHAEL DUNN  
 PROFESSIONAL ENGINEER  
 N.J. LIC. No. 24GE04500000

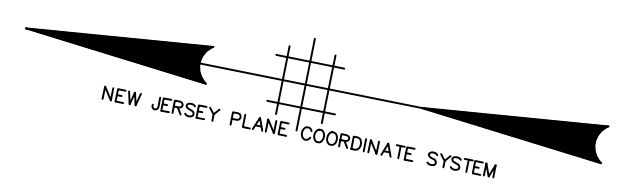
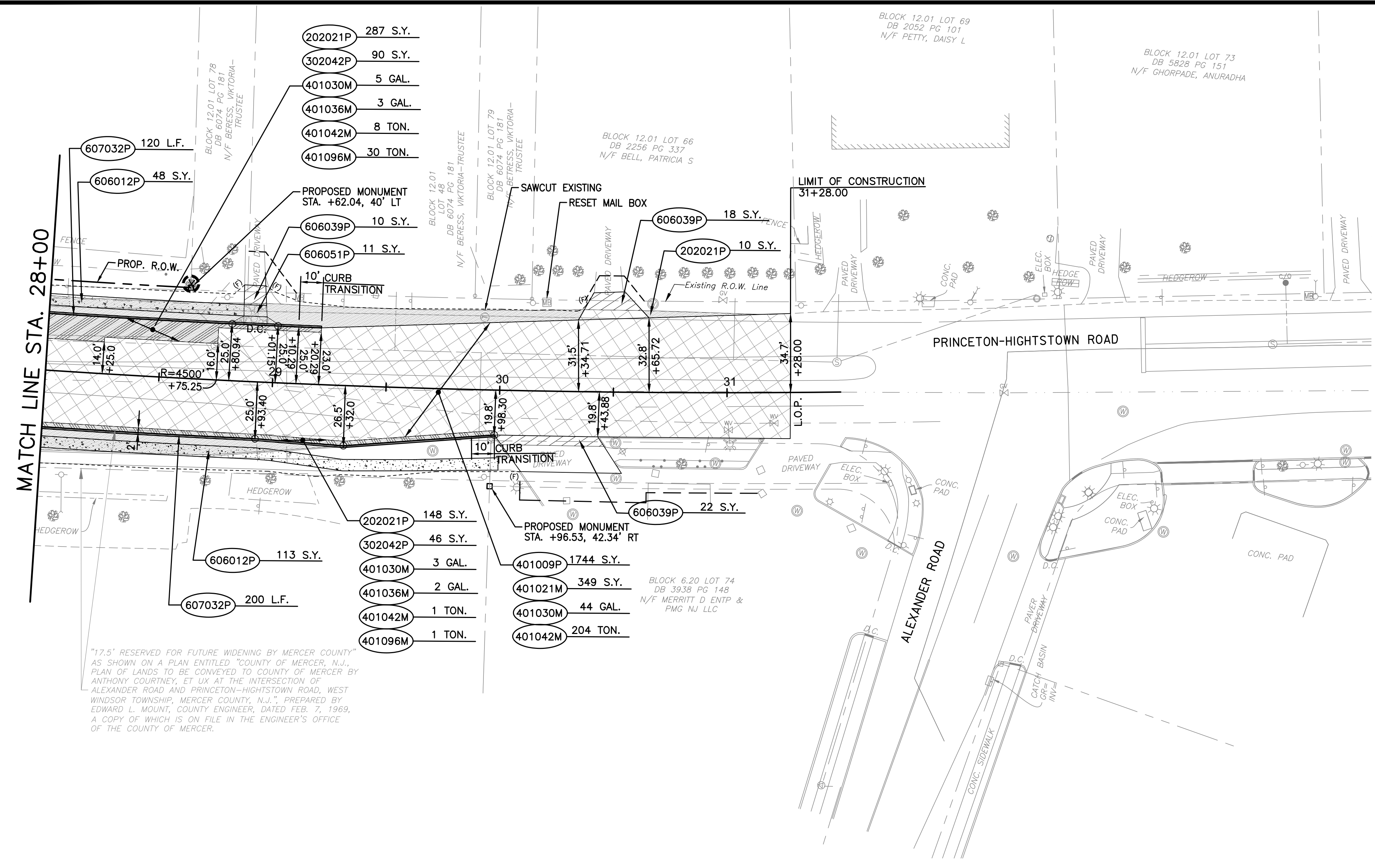
DATE \_\_\_\_\_

CONSTRUCTION PLAN  
 STA. 10+00 TO STA. 28+00

IMPROVEMENTS TO  
**PRINCETON-HIGHTSTOWN ROAD**  
 COUNTY ROUTE No. 571  
 FROM STA. 13+19 TO STA. 31+28  
 TOWNSHIP OF WEST WINDSOR, MERCER COUNTY

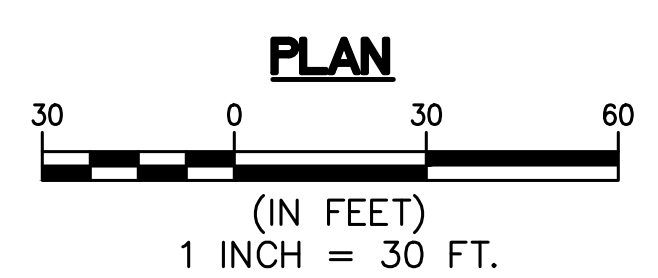
DES. BY	DATE	APRIL, 2020	SCALE	AS SHOWN	SHEET No.
CHKD BY	DATE	APRIL, 2020	FLD. BY		
DRAWN BY	DATE	APRIL, 2020	BK		7
CHKD BY	DATE	APRIL, 2020	APP'D BY		68

LOUIS BERGER, MORRISTOWN, NJ CADD FILE: V:\Operations\167-DR\PC\1001\Technical\Cadd\Sheet Files\Contract 1\05\_Construction Plans.dwg Jun 08, 2020 - 3:26pm



"17.5' RESERVED FOR FUTURE WIDENING BY MERCER COUNTY" AS SHOWN ON A PLAN ENTITLED "COUNTY OF MERCER, N.J., PLAN OF LANDS TO BE CONVEYED TO COUNTY OF MERCER BY ANTHONY COURTNEY, ET UX AT THE INTERSECTION OF ALEXANDER ROAD AND PRINCETON-HIGHTSTOWN ROAD, WEST WINDSOR TOWNSHIP, MERCER COUNTY, N.J.", PREPARED BY EDWARD L. MOUNT, COUNTY ENGINEER, DATED FEB. 7, 1989, A COPY OF WHICH IS ON FILE IN THE ENGINEER'S OFFICE OF THE COUNTY OF MERCER.

ITEM NO.	TO BE CONSTRUCTED	CONTRACT QUANTITY
157006M	MONUMENT	2 U.
202021P	REMOVAL OF PAVEMENT	445 S.Y.
302042P	DENSE-GRADED AGGREGATE BASE COURSE, 8" THICK	136 S.Y.
401009P	HMA MILLING, 3" OR LESS	1744 S.Y.
401021M	HOT MIX ASPHALT PAVEMENT REPAIR	349 S.Y.
401030M	TACK COAT	52 GAL.
401036M	PRIME COAT	5 GAL.
401042M	HOT MIX ASPHALT 9.5 M 64 SURFACE COURSE	213 TON
401096M	HOT MIX ASPHALT 19 M 64 BASE COURSE	31 TON
606012P	CONCRETE SIDEWALK, 4" THICK	161 S.Y.
606039P	HOT MIX ASPHALT DRIVEWAY, 6" THICK	50 S.Y.
606051P	CONCRETE DRIVEWAY, 6" THICK	11 S.Y.
607032P	9" X 16" CONCRETE VERTICAL CURB WITH GUTTER	320 L.F.
802024M	TREE REMOVAL OVER 12" TO 18" DIAMETER	1 U.



**wsp**

MICHAEL DUNN  
PROFESSIONAL ENGINEER  
N.J. LIC. No. 24GE04500000

DATE \_\_\_\_\_

**CONSTRUCTION PLAN**  
STA. 28+00 TO STA. 46+00

**IMPROVEMENTS TO**  
**PRINCETON-HIGHTSTOWN ROAD**  
**COUNTY ROUTE No. 571**  
FROM STA. 13+19 TO STA. 31+28  
TOWNSHIP OF WEST WINDSOR, MERCER COUNTY

DES. BY	DATE	APRIL, 2020	SCALE	AS SHOWN	SHEET No.
CHK'D BY	DATE	APRIL, 2020	FLD. WK. BY		
DRAWN BY	DATE	APRIL, 2020	BK.		8
CHK'D BY	DATE	APRIL, 2020	APP'D BY		68

C-2  
C-2