

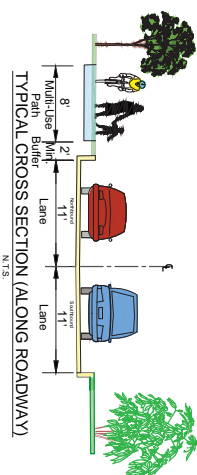


MATCHLINE A-A

- LEGEND**
- ROADWAY
 - MULTI-USE PATH
 - GRASS/LANDSCAPE
 - RIGHT-OF-WAY (ROW)
 - STEEP SLOPE 20% OR GREATER

NOTES:

- 1) KNOWN STEEP SLOPES ARE APPROXIMATE.
- 2) NOT ALL PATH SLOPES ARE KNOWN.



ALTERNATIVE 5

CRANBURY ROAD (CR 615) AREA BICYCLE AND PEDESTRIAN MOBILITY ALTERNATIVES
TOWNSHIP OF WEST WINNSBOR, MERCER COUNTY, NJ

CONTRACT NO.	DATE	SCALE	SHEET NO.
CRANBURY RD	1/16/20	AS SHOWN	1
CRANBURY RD	1/16/20	AS SHOWN	16

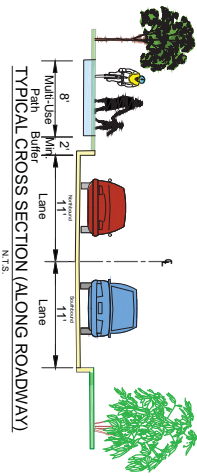
MATCHLINE A-A



MATCHLINE B-B

- LEGEND**
- ROADWAY
 - MULTI-USE PATH
 - GRASSLANDSCAPE
 - RIGHT-OF-WAY (ROW)
 - STEEP SLOPE 20% OR GREATER

NOTES:
 1) KNOWN STEEP SLOPES ARE APPROXIMATE.
 2) NOT ALL PATH SLOPES ARE KNOWN.

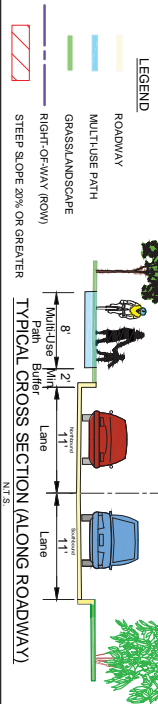


ALTERNATIVE 5			
CRANBURY ROAD (CR 615) AREA BICYCLE AND PEDESTRIAN MOBILITY ALTERNATIVES			
TOWNSHIP OF WEST WINDSOR, MERCER COUNTY, NJ			
DATE	SCALE	DATE	SCALE
DESIGN	AS SHOWN	DATE	SCALE
NO. 1	NO. 1	NO. 1	NO. 1
NO. 2	NO. 2	NO. 2	NO. 2
NO. 3	NO. 3	NO. 3	NO. 3
NO. 4	NO. 4	NO. 4	NO. 4
NO. 5	NO. 5	NO. 5	NO. 5
NO. 6	NO. 6	NO. 6	NO. 6
NO. 7	NO. 7	NO. 7	NO. 7
NO. 8	NO. 8	NO. 8	NO. 8
NO. 9	NO. 9	NO. 9	NO. 9
NO. 10	NO. 10	NO. 10	NO. 10
NO. 11	NO. 11	NO. 11	NO. 11
NO. 12	NO. 12	NO. 12	NO. 12
NO. 13	NO. 13	NO. 13	NO. 13
NO. 14	NO. 14	NO. 14	NO. 14
NO. 15	NO. 15	NO. 15	NO. 15
NO. 16	NO. 16	NO. 16	NO. 16

MATCHLINE B-B



MATCHLINE C-C



LEGEND

- ROADWAY
- MULTI-USE PATH
- GRASS/LANDSCAPE
- RIGHT-OF-WAY (ROW)
- STEP SLOPE 2% OR GREATER

NOTES:

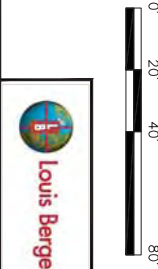
- 1) KNOWN STEEP SLOPES ARE APPROXIMATE.
- 2) NOT ALL PATH SLOPES ARE KNOWN.

11' 8' 2' 11'

Multi-Use Path Buffer Lane Lane

2% 2%

TYPICAL CROSS SECTION (ALONG ROADWAY)



ALTERNATIVE 5

CRANBURY ROAD (CR 615) AREA BICYCLE AND PEDESTRIAN MOBILITY ALTERNATIVES TOWNSHIP OF WEST WINSOR, MERCER COUNTY, NJ

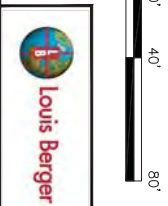
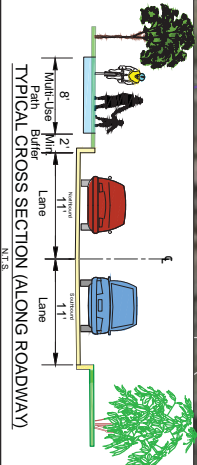
NO.	DATE	BY	FOR	SCALE	SHEET NO.
1					3
2					16

MATCHLINE C-C

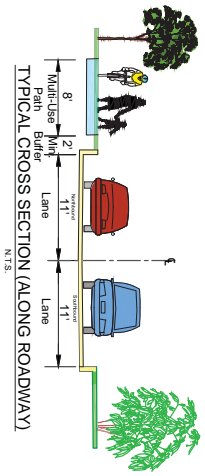


- LEGEND**
- ROADWAY
 - MULTIPLE PATH
 - GRASSLANDSCAPE
 - RIGHT-OF-WAY (ROW)
 - STEEP SLOPE 20% OR GREATER

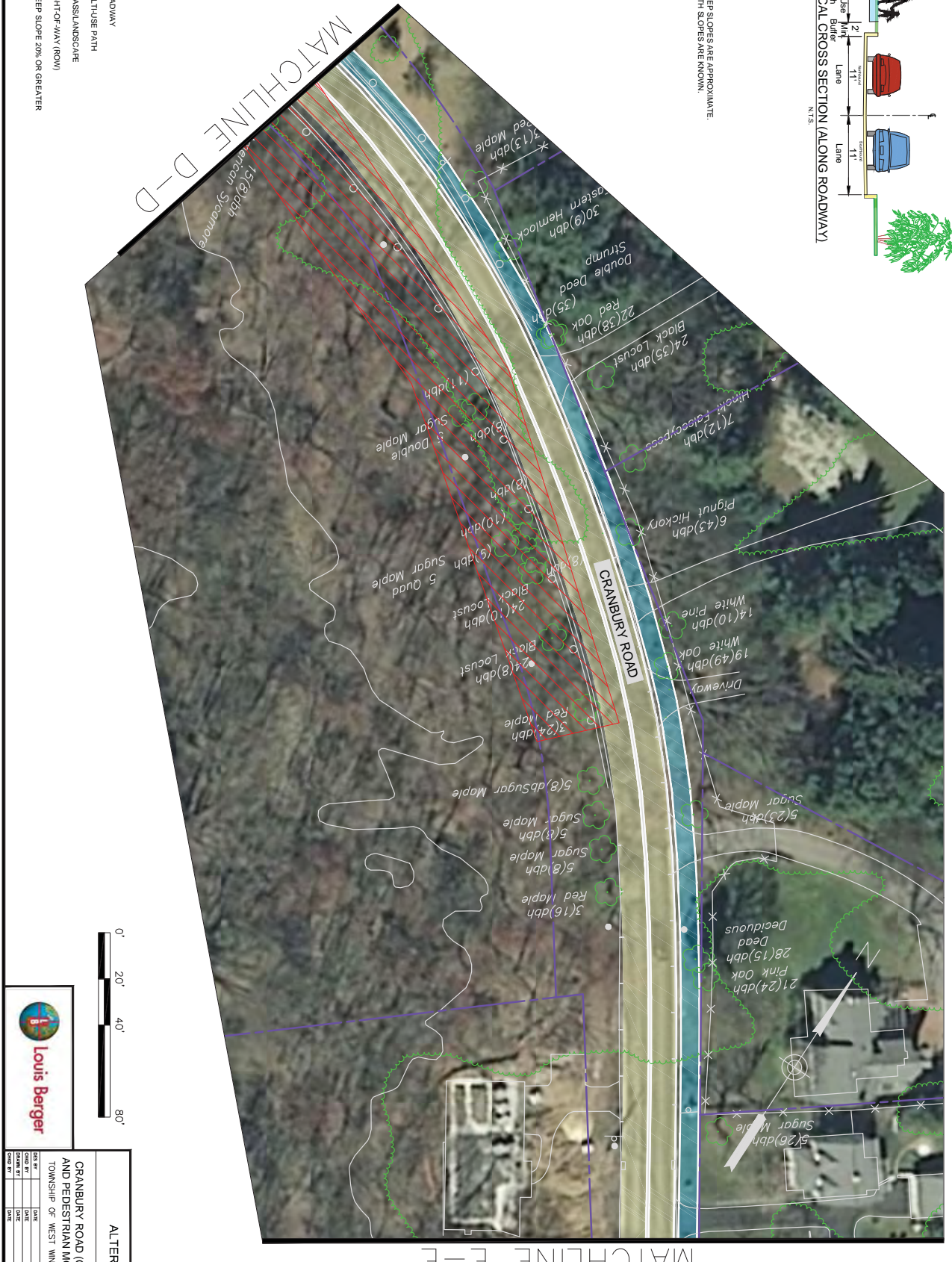
NOTES:
 1) KNOWN STEEP SLOPES ARE APPROXIMATE.
 2) NOT ALL PATH SLOPES ARE KNOWN.



ALTERNATIVE 5			
CRANBURY ROAD (CR 615) AREA BICYCLE AND PEDESTRIAN MOBILITY ALTERNATIVES			
TOWNSHIP OF WEST WINSOR, MERCER COUNTY, NJ			
DATE	SCALE	SHEET NO.	4 / 16
DATE	SCALE	SHEET NO.	
DATE	SCALE	SHEET NO.	



NOTES:
1) KNOWN STEEP SLOPES ARE APPROXIMATE.
2) NOT ALL PATH SLOPES ARE KNOWN.

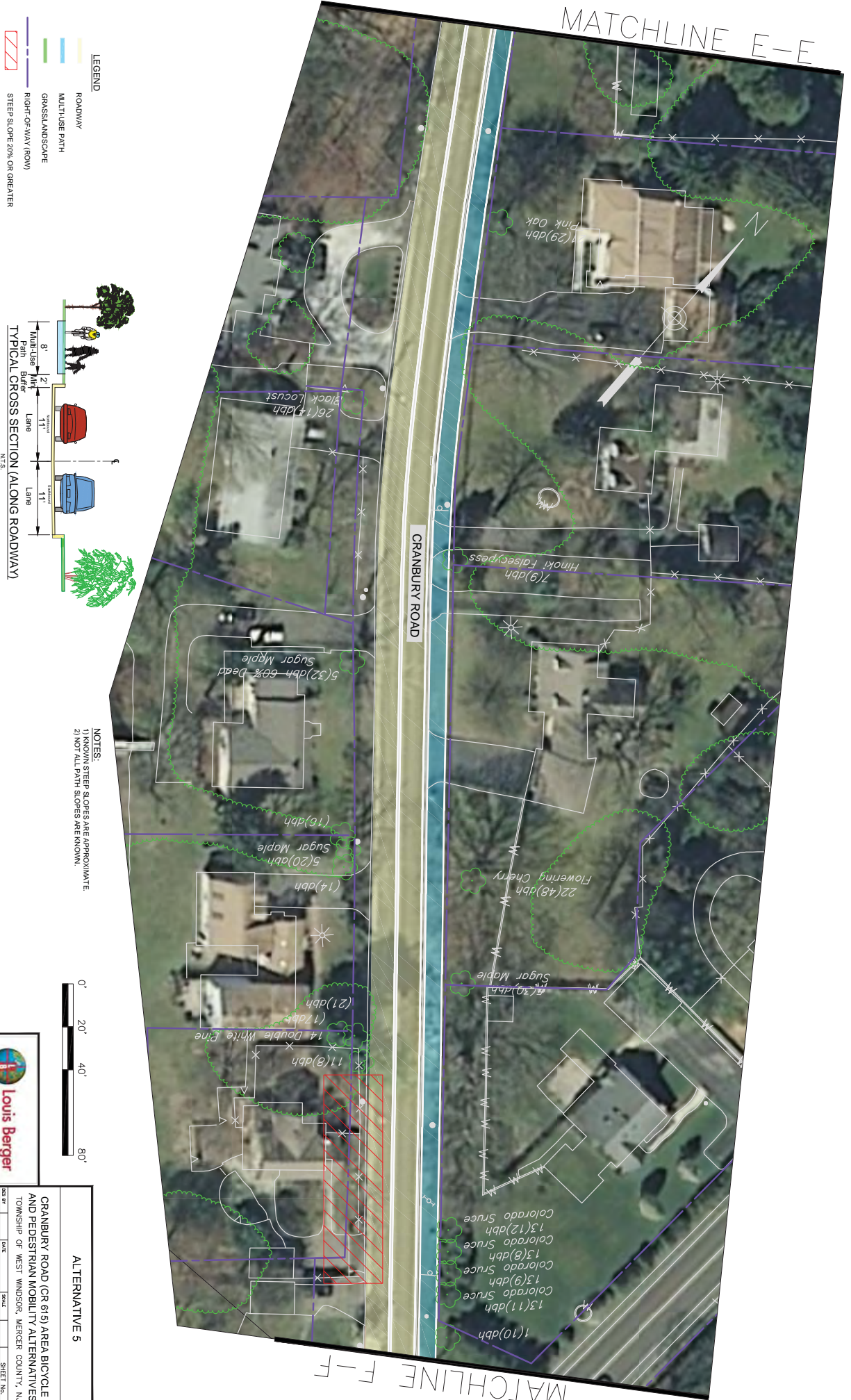


ALTERNATIVE 5

CRANBURY ROAD (CR 615) AREA BICYCLE AND PEDESTRIAN MOBILITY ALTERNATIVES
TOWNSHIP OF WEST WINDSOR, MERCER COUNTY, NJ

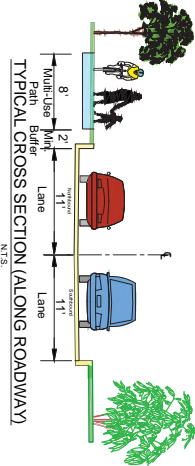
ROW BY	DATE	SCALE	SHEET NO.
CRANBURY RD	DATE	SCALE	5
CRANBURY RD	DATE	SCALE	16

MATCHLINE E-E



MATCHLINE F-F

- LEGEND**
- ROADWAY
 - MULTIPLE USE PATH
 - GRASS/LANDSCAPE
 - RIGHT-OF-WAY (ROW)
 - STEEP SLOPE 20% OR GREATER



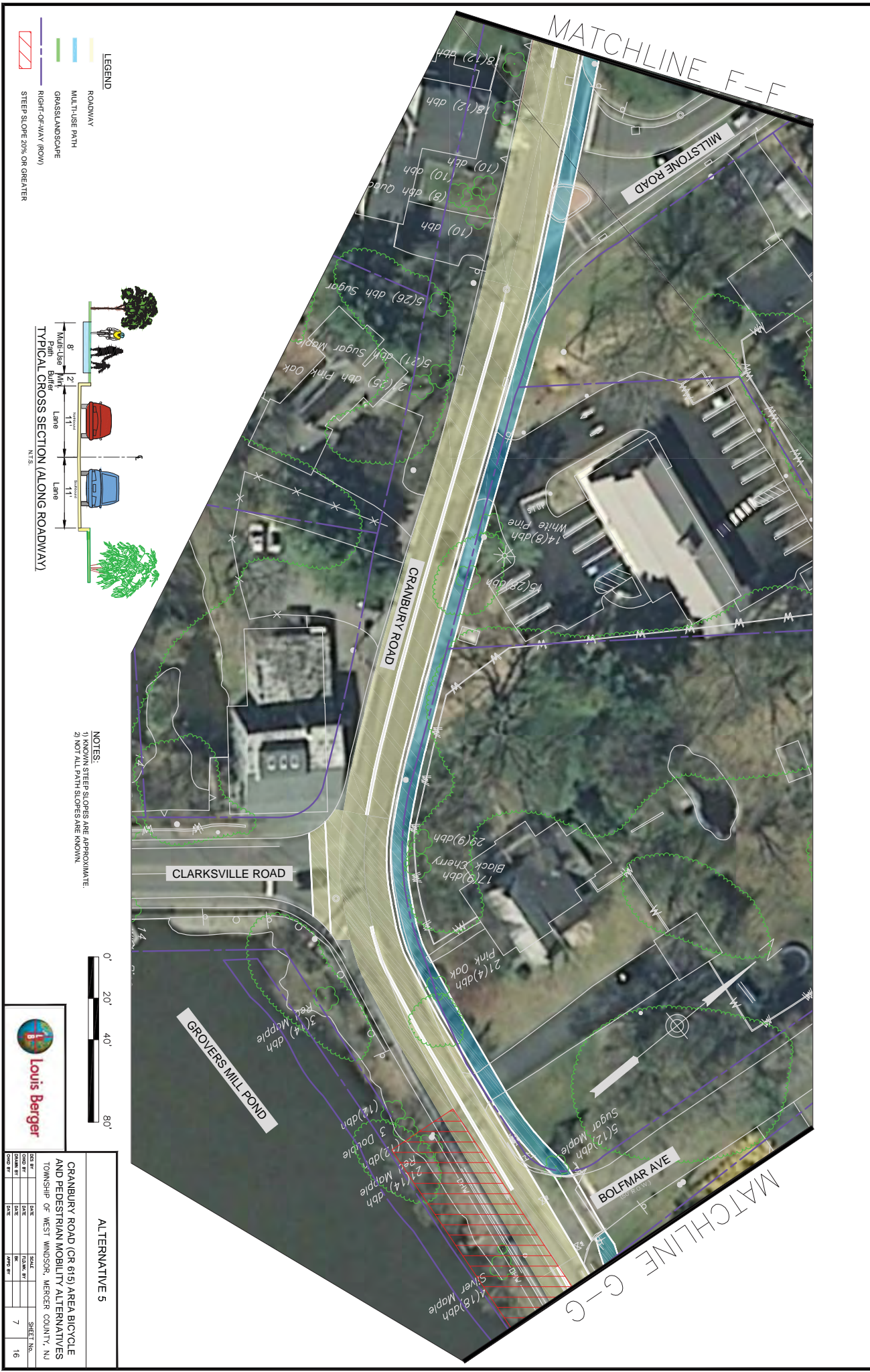
NOTES:
 1) KNOWN STEEP SLOPES ARE APPROXIMATE
 2) NOT ALL PATH SLOPES ARE KNOWN.



ALTERNATIVE 5

CRANBURY ROAD (CR 615) AREA BICYCLE AND PEDESTRIAN MOBILITY ALTERNATIVES
 TOWNSHIP OF WEST WINDSOR, MERCER COUNTY, NJ

ROW BY	DATE	SCALE	SHEET NO.
CRANBY	1/16/20	AS SHOWN	6
ROW BY	DATE	SCALE	SHEET NO.
CRANBY	1/16/20	AS SHOWN	16

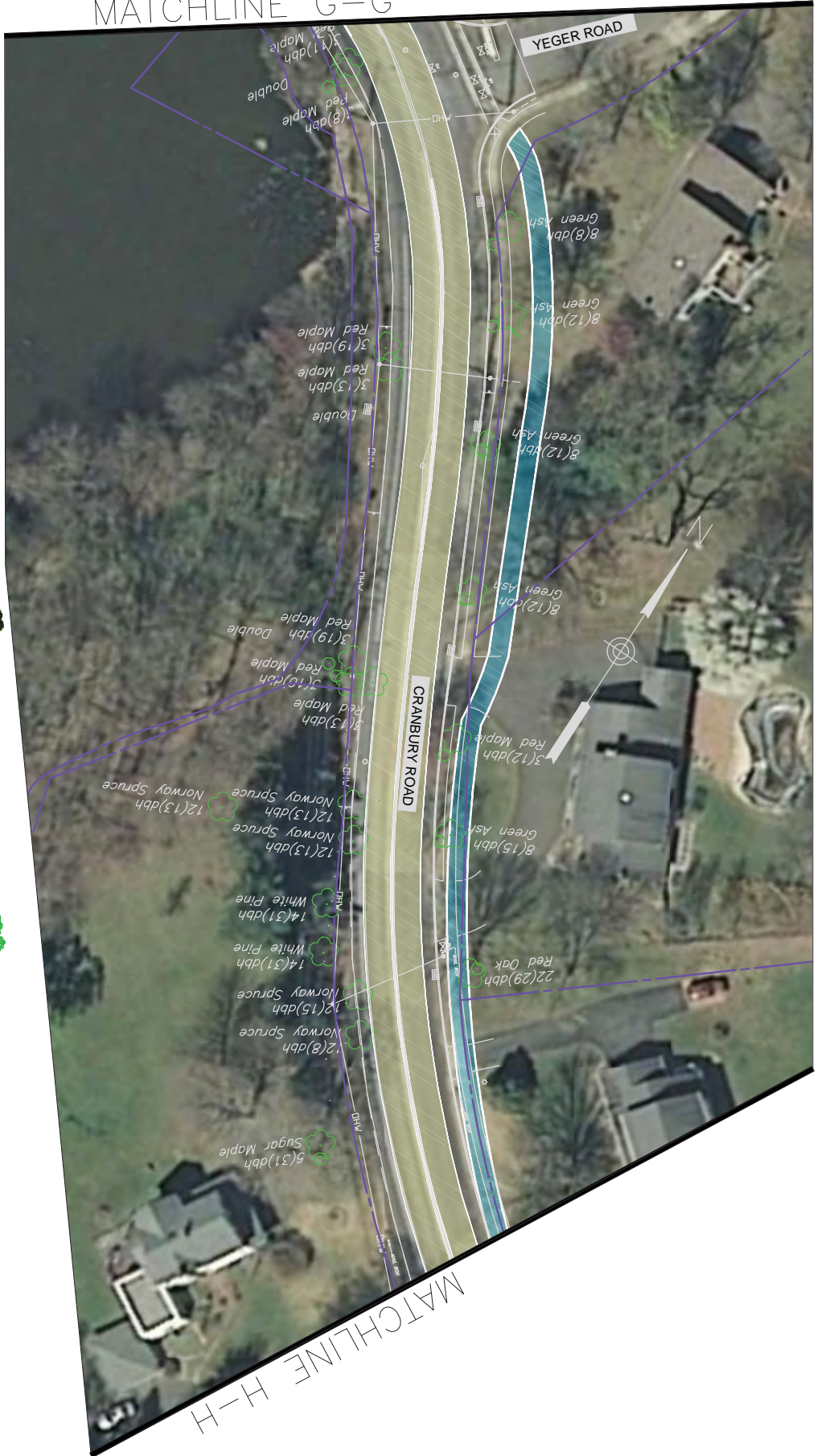


ALTERNATIVE 5

CRANBURY ROAD (CR 615) AREA BICYCLE AND PEDESTRIAN MOBILITY ALTERNATIVES TOWNSHIP OF WEST WINDSOR, MERCER COUNTY, NJ

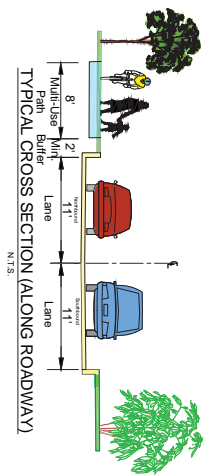
NO. BY	DATE	SCALE	SHEET NO.
001	01/15/16	AS SHOWN	7
002	01/15/16	AS SHOWN	16

MATCHLINE G-G



- LEGEND**
- ROADWAY
 - MULTI-USE PATH
 - GRASS/LANDSCAPE
 - RIGHT-OF-WAY (ROW)
 - STEEP SLOPE 20% OR GREATER

NOTES:
 1) KNOWN STEEP SLOPES ARE APPROXIMATE.
 2) NOT ALL PATH SLOPES ARE KNOWN.



ALTERNATIVE 5					
CRANBURY ROAD (CR 615) AREA BICYCLE AND PEDESTRIAN MOBILITY ALTERNATIVES TOWNSHIP OF WEST WINDSOR, MERCER COUNTY, NJ					
NO. BY	DATE	SCALE	NO. BY	DATE	SHEET NO.
CRANBY	1/15/16	AS SHOWN	CRANBY	1/15/16	8
CRANBY	1/15/16	AS SHOWN	CRANBY	1/15/16	16

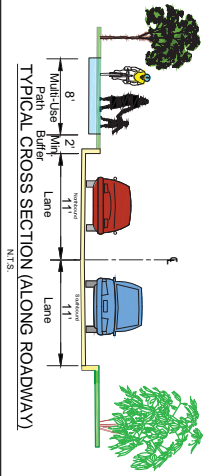
MATCHLINE H-H



MATCHLINE I-I

- LEGEND**
- ROADWAY
 - MULTUSE PATH
 - GRASSLANDSCAPE
 - RIGHT-OF-WAY (ROW)
 - STEEP SLOPE 20% OR GREATER

NOTES:
 1) VALUES STEEP SLOPES ARE APPROXIMATE.
 2) NOT ALL PATH SLOPES ARE KNOWN.



CRANBURY ROAD (CR 615) AREA BICYCLE AND PEDESTRIAN MOBILITY ALTERNATIVES		SHEET NO.	
TOWNSHIP OF WEST WINDSOR, MERCER COUNTY, NJ		9	
DATE	SCALE	DATE	SCALE

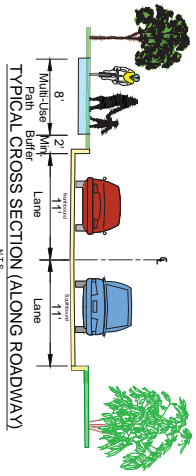
MATCHLINE 1-1



MATCHLINE J-J

- LEGEND**
- ROADWAY
 - MULTI-USE PATH
 - GRASSLANDSCAPE
 - RIGHT-OF-WAY (ROW)
 - STEEP SLOPE 20% OR GREATER

NOTES:
 1) KNOWN STEEP SLOPES ARE APPROXIMATE.
 2) NOT ALL PATH SLOPES ARE KNOWN.

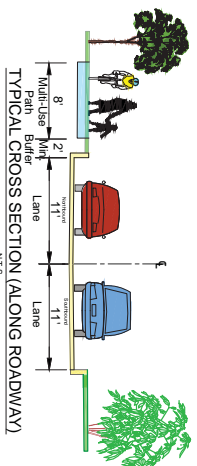


ALTERNATIVE 5			
CRANBURY ROAD (CR 615) AREA BICYCLE AND PEDESTRIAN MOBILITY ALTERNATIVES			
TOWNSHIP OF WEST WINDSOR, MERCER COUNTY, NJ			
NO. BY	DATE	SCALE	SHEET NO.
CRANBY	1/2016	AS SHOWN	10
NO. BY	DATE	SCALE	SHEET NO.
CRANBY	1/2016	AS SHOWN	16



- LEGEND**
- ROADWAY
 - MULTI-USE PATH
 - GRASSLANDSCAPE
 - RIGHT-OF-WAY (ROW)
 - STEEP SLOPE 20% OR GREATER

NOTES:
 1) KNOWN STEEP SLOPES ARE APPROXIMATE.
 2) NOT ALL PATH SLOPES ARE KNOWN.



ALTERNATIVE 5					
CRANBURY ROAD (CR 615) AREA BICYCLE AND PEDESTRIAN MOBILITY ALTERNATIVES TOWNSHIP OF WEST WINDSOR, MERCER COUNTY, NJ					
NO. BY	DATE	SCALE	SHEET	SHEET NO.	
CRANBURY	11/11/2011	AS SHOWN	11	16	

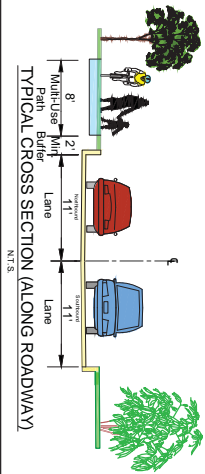
MATCHLINE K-K



MATCHLINE L-L

- LEGEND**
- ROADWAY
 - MULTI-USE PATH
 - GRASS/LANDSCAPE
 - RIGHT-OF-WAY (ROW)
 - STEEP SLOPE 20% OR GREATER

NOTES:
 1) KNOWN STEEP SLOPES ARE APPROXIMATE.
 2) NOT ALL PATH SLOPES ARE KNOWN.



ALTERNATIVE 5

CRANBURY ROAD (CR 615) AREA BICYCLE AND PEDESTRIAN MOBILITY ALTERNATIVES TOWNSHIP OF WEST WINDSOR, MERCER COUNTY, NJ

CONTRACT NO.	DATE	SCALE	SHEET NO.
CRANBURY RD	12		16

MATCHLINE L-L

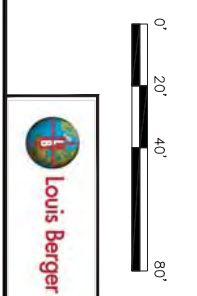
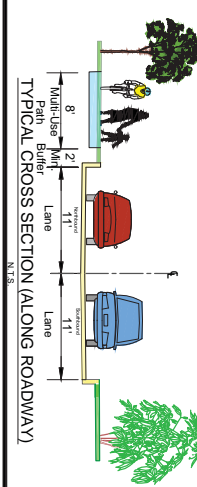


MATCHLINE M-M

LEGEND

- ROADWAY
- MULTI-USE PATH
- GRASSLANDSCAPE
- RIGHT-OF-WAY (ROW)
- STEEP SLOPE 20% OR GREATER

NOTES:
 1) KNOWN STEEP SLOPES ARE APPROXIMATE.
 2) NOT ALL PATH SLOPES ARE KNOWN.

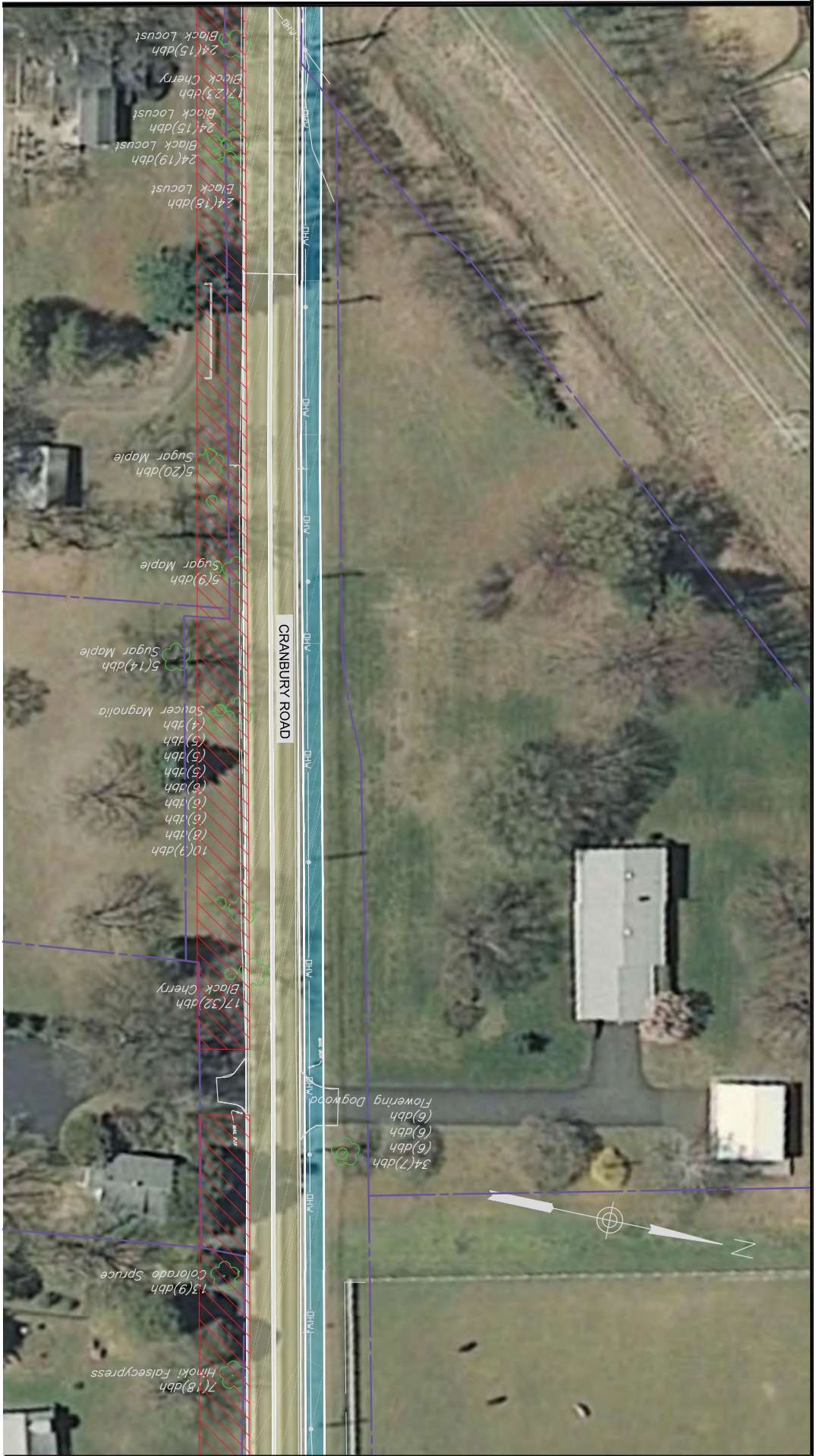


ALTERNATIVE 5

CRANBURY ROAD (CR 615) AREA BICYCLE AND PEDESTRIAN MOBILITY ALTERNATIVES
 TOWNSHIP OF WEST WINDSOR, MERCER COUNTY, NJ

CONTRACT NO.	DATE	SCALE	SHEET NO.
CRANBURY	2014	AS SHOWN	13
CRANBURY	2014	AS SHOWN	16

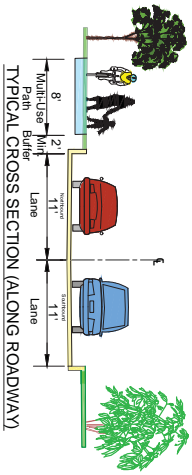
MATCHLINE M-M



MATCHLINE N-N

- LEGEND**
- ROADWAY
 - MULTI-USE PATH
 - GRASSLANDSCAPE
 - RIGHT-OF-WAY (ROW)
 - STEEP SLOPE 20% OR GREATER

NOTES:
 1) KNOWN STEEP SLOPES ARE APPROXIMATE.
 2) NOT ALL PATH SLOPES ARE KNOWN.



ALTERNATIVE 5			
CONTRACT NO.	DATE	SCALE	SHEET NO.
CRANBURY RD	1/14/14	AS SHOWN	14
TOWNSHIP OF WEST WINDSOR, MERCER COUNTY, NJ			16

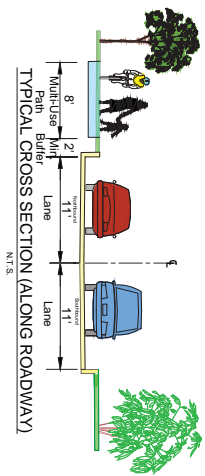
MATCHLINE N-N



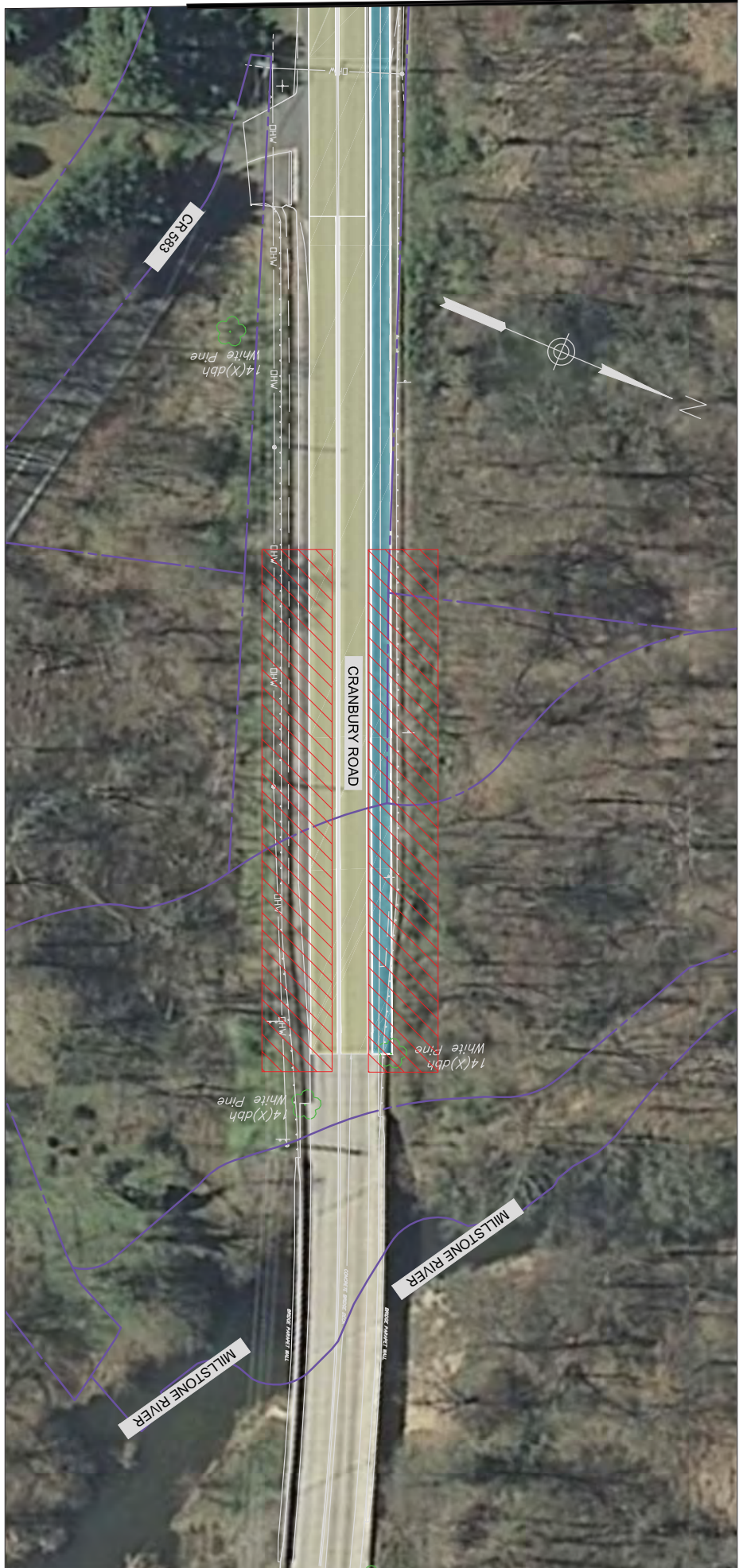
MATCHLINE 0-0

- LEGEND**
- ROADWAY
 - MULTI-USE PATH
 - GRASSLANDSCAPE
 - RIGHT-OF-WAY (ROW)
 - STEEP SLOPE 20% OR GREATER

NOTES:
 1) KNOWN STEEP SLOPES ARE APPROXIMATE.
 2) NOT ALL PATH SLOPES ARE KNOWN.

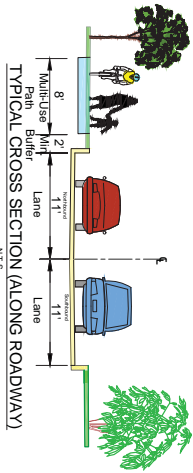


ALTERNATIVE 5			
CRANBURY ROAD (CR 615) AREA BICYCLE AND PEDESTRIAN MOBILITY ALTERNATIVES TOWNSHIP OF WEST WINDSOR, MERCER COUNTY, NJ			
CONTRACT NO.	DATE	SHEET NO.	
CRANBURY ST.	1/15/15	15	16



- LEGEND**
- ROADWAY
 - MULT-USE PATH
 - GRASS/LANDSCAPE
 - RIGHT-OF-WAY (ROW)
 - STEEP SLOPE 20% OR GREATER

- NOTES:**
- 1) KNOWN STEEP SLOPES ARE APPROXIMATE.
 - 2) NOT ALL PATH SLOPES ARE KNOWN.



ALTERNATIVE 5				SHEET No.	
CONTRACT NO.	DATE	SCALE	DATE	16	16
CRANBURY RD					
TOWNSHIP OF WEST WINDSOR, MERCER COUNTY, NJ					