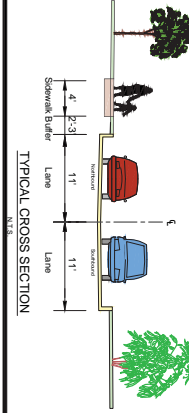




MATCHLINE A-A

- LEGEND**
- ROADWAY
  - GRASS/LANDSCAPE
  - SIDEWALK
  - RIGHT-OF-WAY (ROW)
  - STEP SLOPE 20% OR GREATER



**HYBRID ALTERNATIVE**

CRANBURY ROAD (CR 615) AREA BICYCLE AND PEDESTRIAN MOBILITY ALTERNATIVES  
TOWNSHIP OF WEST WINDSOR, MERCER COUNTY, NJ

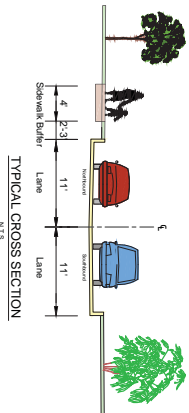
CONTRACT NO.	DATE	SCALE	SHEET NO.
16	1	16	16

MATCHLINE A-A



MATCHLINE B-B

- LEGEND**
- ROADWAY
  - GRASSLANDSCAPE
  - SIDEWALK
  - RIGHT-OF-WAY (ROW)
  - STEEP SLOPE 20% OR GREATER

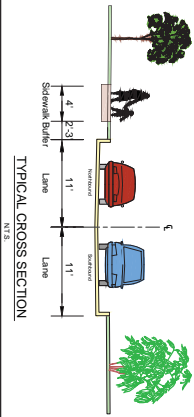


CRANBURY ROAD (CR 615) AREA BICYCLE AND PEDESTRIAN MOBILITY ALTERNATIVES				TOWNSHIP OF WEST WINDSOR, MERCER COUNTY, NJ	
DATE	SCALE	DATE	SCALE	SHEET NO.	
10/20/17	AS SHOWN	10/20/17	AS SHOWN	2	16

MATCHLINE B-B

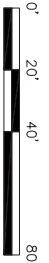


MATCHLINE C-C



TYPICAL CROSS SECTION  
N.T.S.

- LEGEND**
- ROADWAY
  - GRASSLANDSCAPE
  - SIDEWALK
  - RIGHT-OF-WAY (ROW)
  - STEEP SLOPE 20% OR GREATER



**HYBRID ALTERNATIVE**

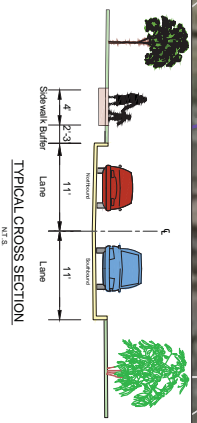
CRANBURY ROAD (CR 615) AREA BICYCLE AND PEDESTRIAN MOBILITY ALTERNATIVES  
TOWNSHIP OF WEST WINDSOR, MERCER COUNTY, NJ

NO. BY	DATE	SCALE	SHEET NO.
01/15/16	1/15/16	AS SHOWN	3
02/02/16	2/2/16	AS SHOWN	16

MATCHLINE C-C



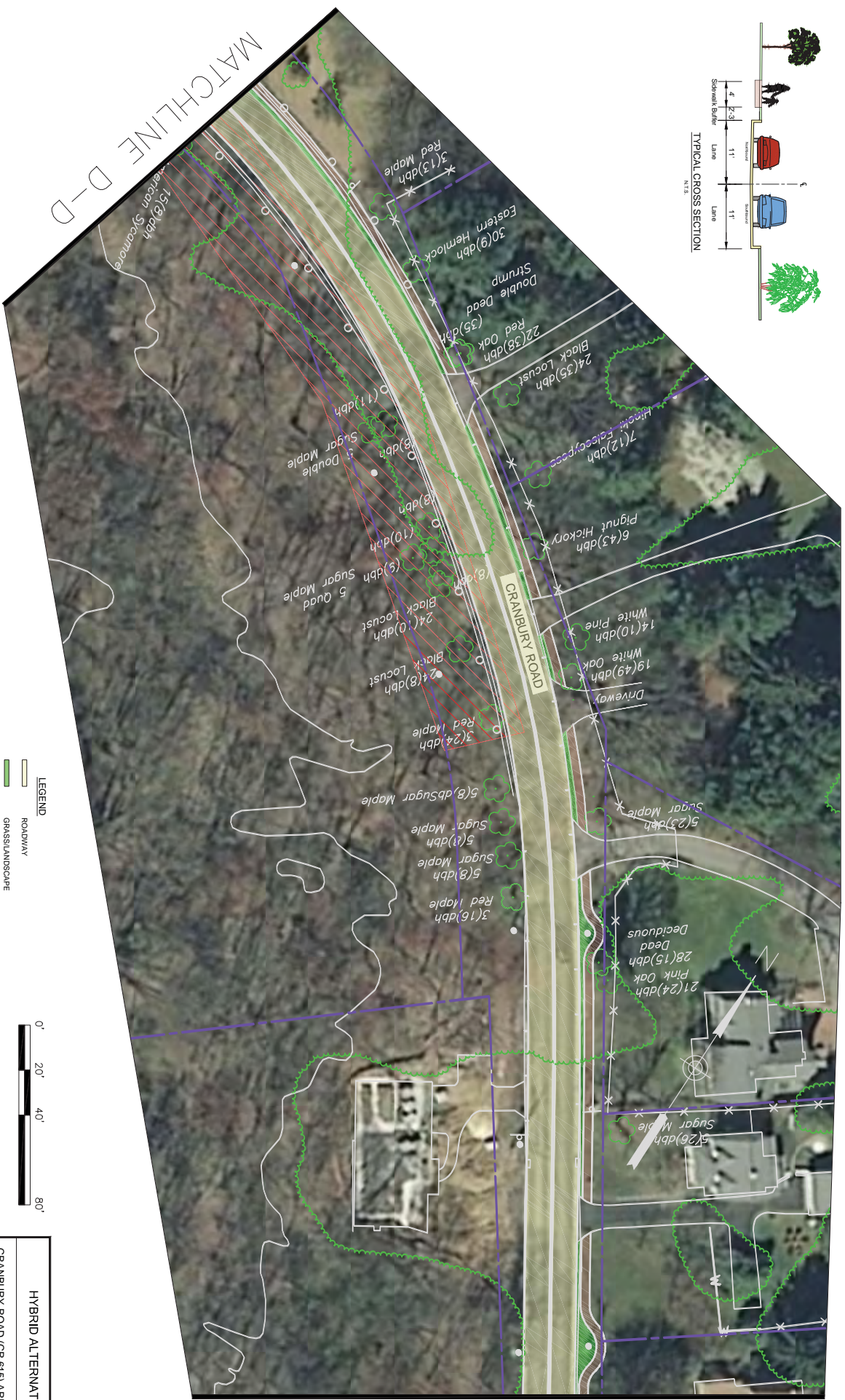
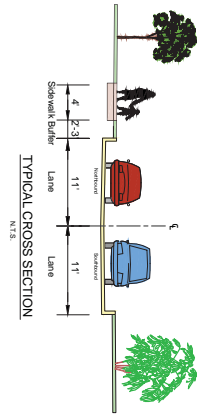
- LEGEND**
- ROADWAY
  - GRASS/SCULPTSCAPE
  - SIDEWALK
  - RIGHT-OF-WAY (ROW)
  - STEEP SLOPE 20% OR GREATER



**HYBRID ALTERNATIVE**

CRANBURY ROAD (CR 615) AREA BICYCLE AND PEDESTRIAN MOBILITY ALTERNATIVES  
TOWNSHIP OF WEST WINSOR, MERCER COUNTY, NJ

NO. BY	DATE	SCALE	SHEET NO.
CRANBY	1/15/24	AS SHOWN	4
WINSOR	1/15/24	AS SHOWN	16



- LEGEND**
- ROADWAY
  - GRASS/LANDSCAPE
  - SIDEWALK
  - RIGHT-OF-WAY (ROW)
  - STEEP SLOPE 20% OR GREATER



**HYBRID ALTERNATIVE**

CRANBURY ROAD (CR 615) AREA BICYCLE AND PEDESTRIAN MOBILITY ALTERNATIVES  
TOWNSHIP OF WEST WINSOR, MERCER COUNTY, NJ

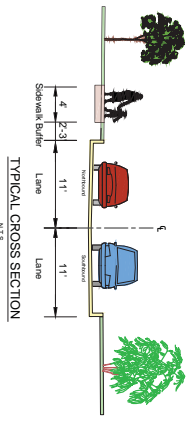
ROW BY	DATE	SCALE	SHEET NO.
CRANBURY RD	DATE	SCALE	5
ROW BY	DATE	SCALE	16

MATCHLINE E-E

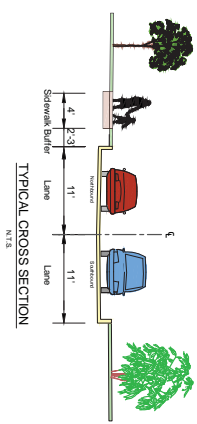
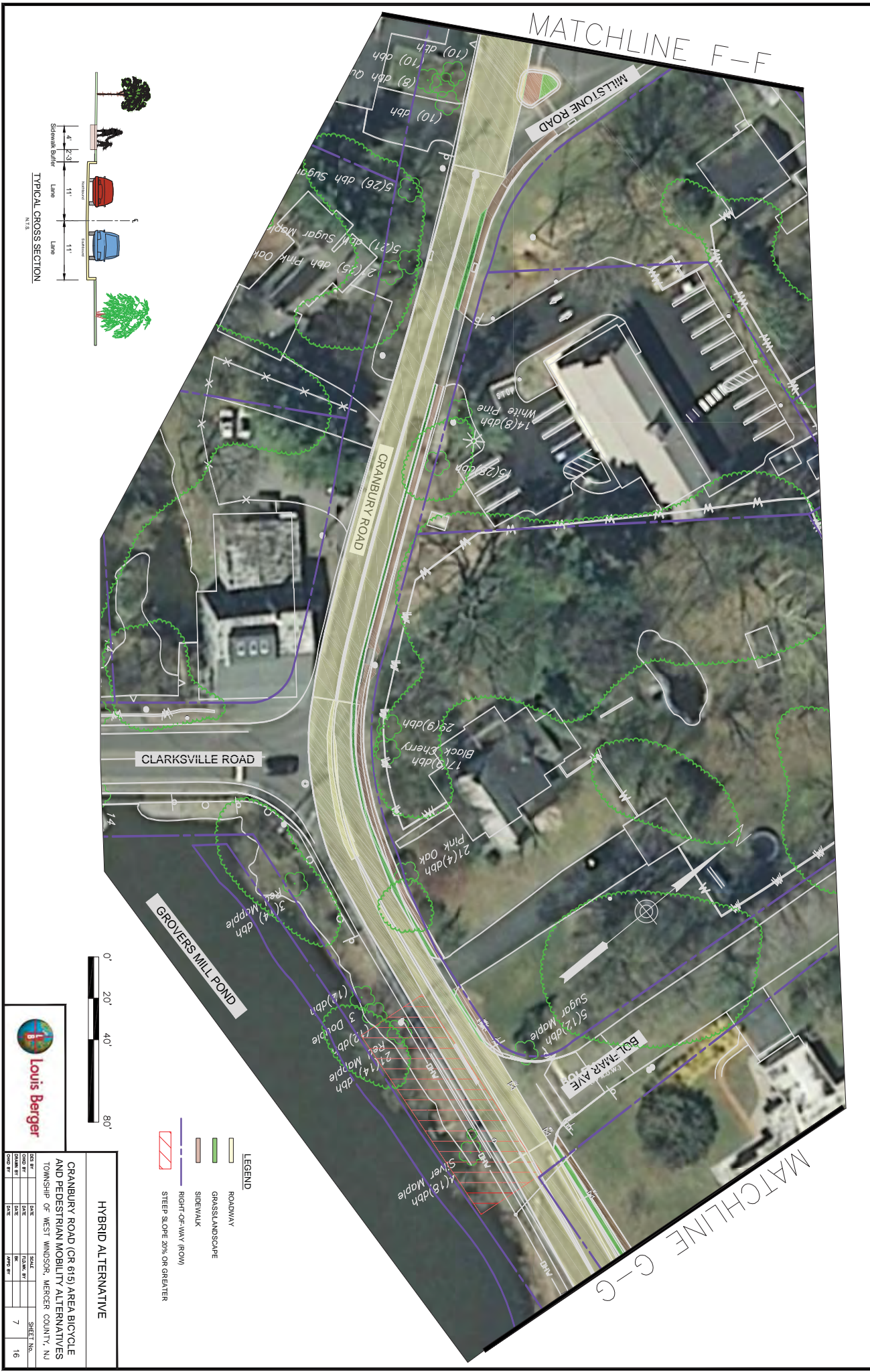


MATCHLINE F-F

- LEGEND**
- ROWWAY
  - GRASSLANDSCAPE
  - SIDEWALK
  - RIGHT-OF-WAY (ROW)
  - STEEP SLOPE 20% OR GREATER



<b>HYBRID ALTERNATIVE</b>			
CRANBURY ROAD (CR 615) AREA BICYCLE AND PEDESTRIAN MOBILITY ALTERNATIVES			
TOWNSHIP OF WEST WINDSOR, MERCER COUNTY, NJ			
DATE	SCALE	SHEET NO.	6
DATE	SCALE	SHEET NO.	16

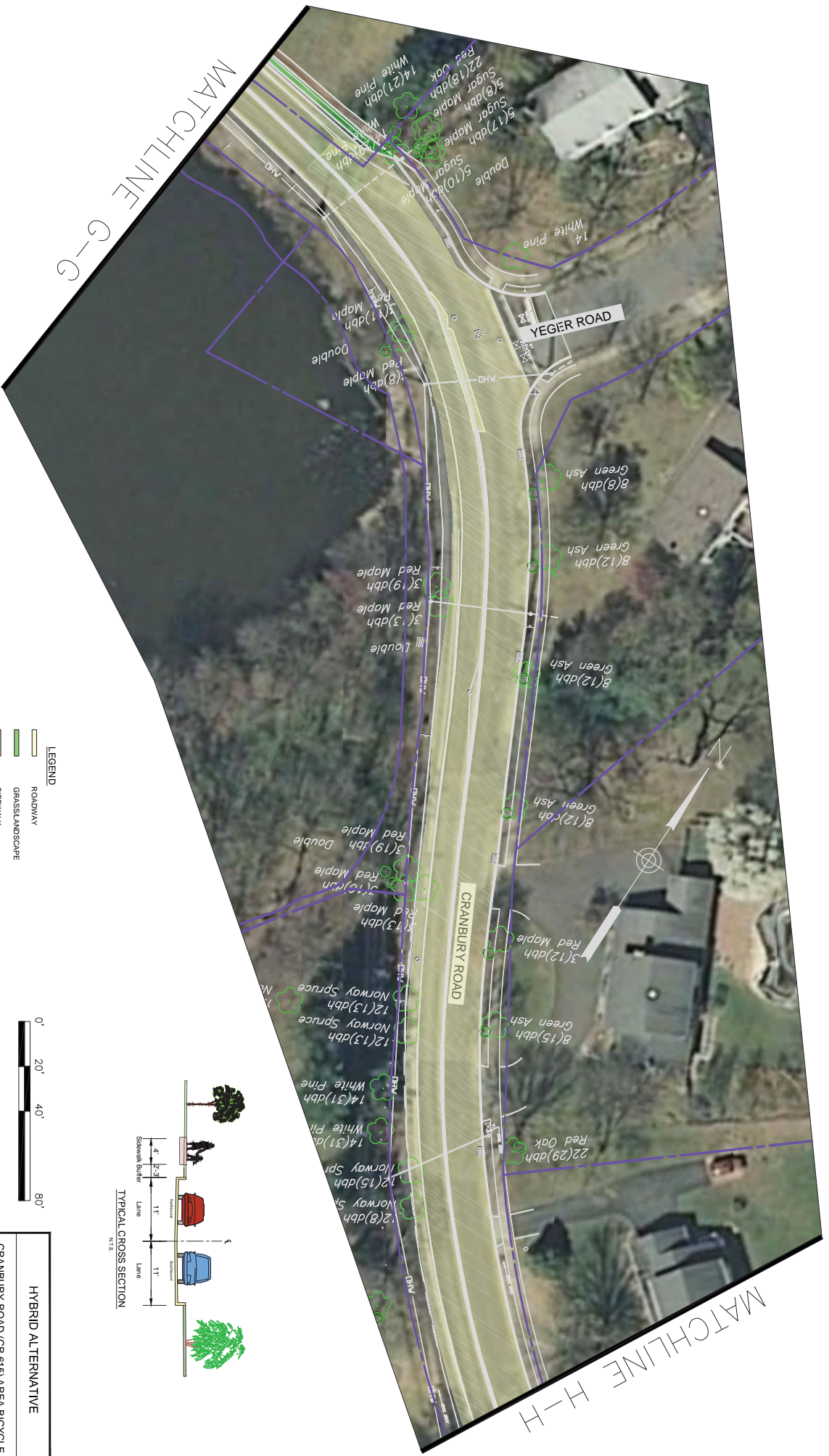


**HYBRID ALTERNATIVE**

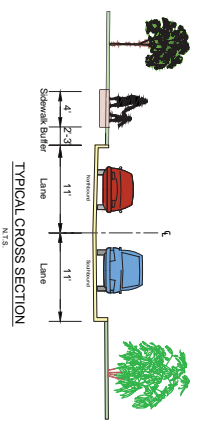
CRANBURY ROAD (CR 615) AREA BICYCLE AND PEDESTRIAN MOBILITY ALTERNATIVES  
 TOWNSHIP OF WEST WINDSOR, MERCER COUNTY, NJ

NO. BY	DATE	SCALE	SHEET NO.
CRANBURY	10/15/14	AS SHOWN	7
REVISED			16

- LEGEND**
- ROADWAY
  - GRASSLANDS/LANDSCAPE
  - SIDEWALK
  - RIGHT-OF-WAY (ROW)
  - STEEP SLOPE 20% OR GREATER



- LEGEND**
- ROADWAY
  - GRASSLANDSCAPE
  - SIDEWALK
  - RIGHT-OF-WAY (ROW)
  - STEEP SLOPE 20% OR GREATER

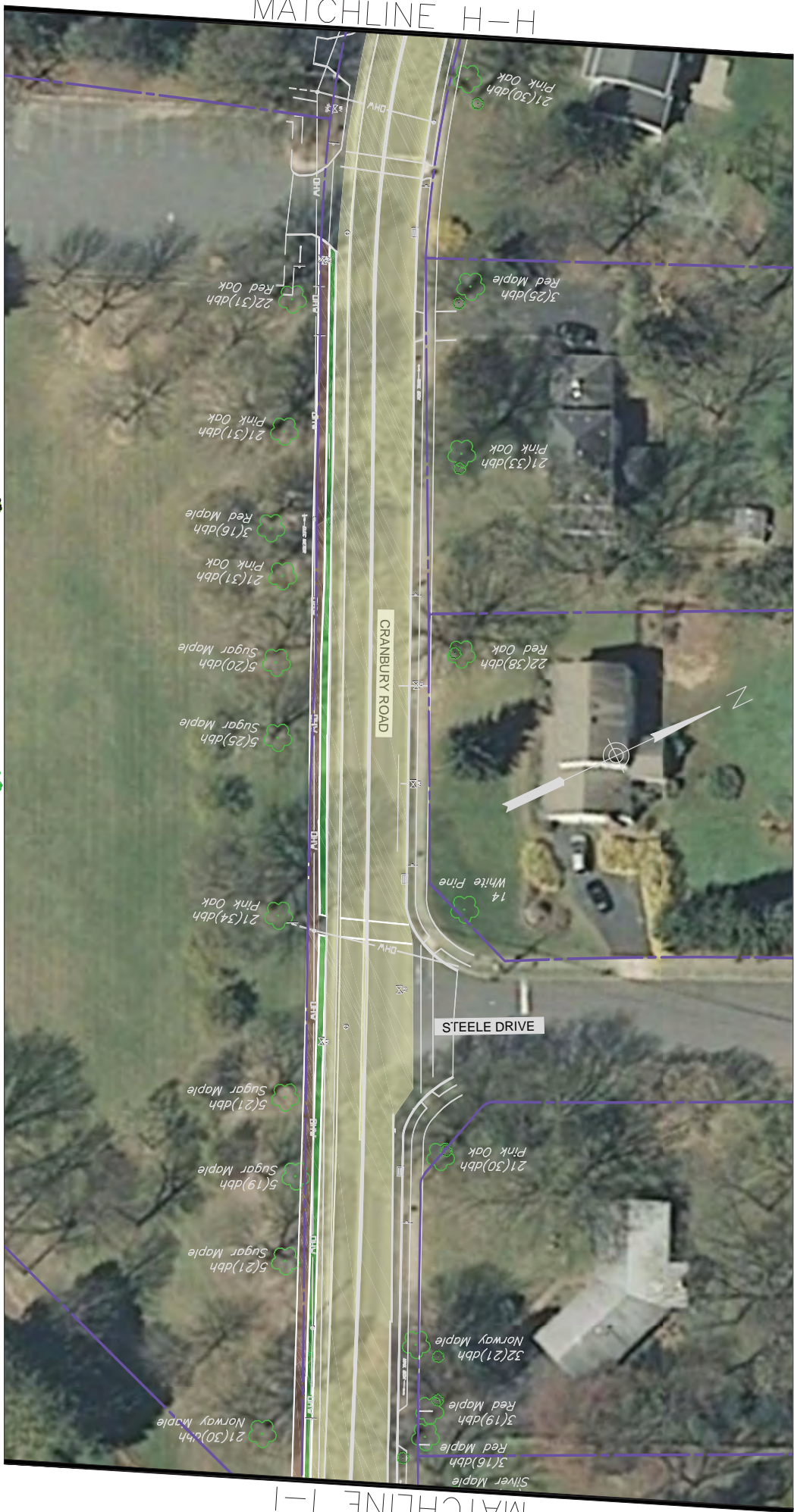


HYBRID ALTERNATIVE			
CONTRACT NO.	DATE	SCALE	SHEET NO.
CRANBURY RD	1/15/16	AS SHOWN	8
PROJECT NO.	DATE	SCALE	SHEET NO.
16-000-000	1/15/16	AS SHOWN	16

CRANBURY ROAD (CR 615) AREA BICYCLE AND PEDESTRIAN MOBILITY ALTERNATIVES  
TOWNSHIP OF WEST WINDSOR, MERCER COUNTY, NJ

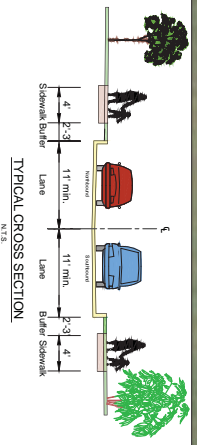


MATCHLINE H-H



MATCHLINE I-I

- LEGEND**
- ROADWAY
  - GRASSLANDSCAPE
  - SIDEWALK
  - RIGHT-OF-WAY (ROW)
  - STEEP SLOPE 20% OR GREATER



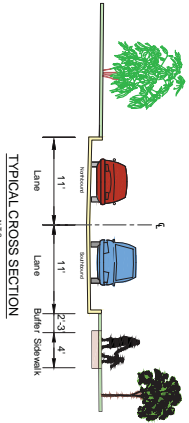
<b>HYBRID ALTERNATIVE</b>			
CRANBURY ROAD (CR 615) AREA BICYCLE AND PEDESTRIAN MOBILITY ALTERNATIVES			
TOWNSHIP OF WEST WINDSOR, MERCER COUNTY, NJ			
DATE	DATE	DATE	DATE
10/20/16	10/20/16	10/20/16	10/20/16
DESIGNED BY	CHECKED BY	DATE	DATE
10/20/16	10/20/16	10/20/16	10/20/16
SHEET NO.			9
TOTAL SHEETS			16

MATCHLINE 1-1



MATCHLINE J-J

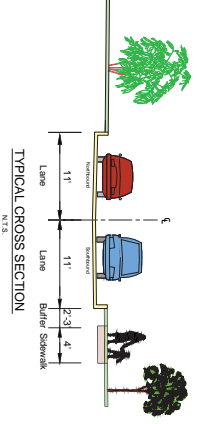
- LEGEND**
- ROADWAY
  - GRASSLANDSCAPE
  - SIDEWALK
  - RIGHT-OF-WAY ROW
  - STEEP SLOPE 20% OR GREATER



<b>HYBRID ALTERNATIVE</b>			
CRANBURY ROAD (CR 615) AREA BICYCLE AND PEDESTRIAN MOBILITY ALTERNATIVES			
TOWNSHIP OF WEST WINDSOR, MERCER COUNTY, NJ			
CONTRACT NO.	DATE	SHEET NO.	TOTAL SHEETS
CRANBURY RD	10/15/16	10	16



- LEGEND**
- ROADWAY
  - GRASS/LANDSCAPE
  - SIDEWALK
  - RIGHT-OF-WAY (ROW)
  - STEEP SLOPE 30% OR GREATER



HYBRID ALTERNATIVE		SHEET No.	
DATE	SCALE	NO.	OF
2018-05-01	AS SHOWN	11	16

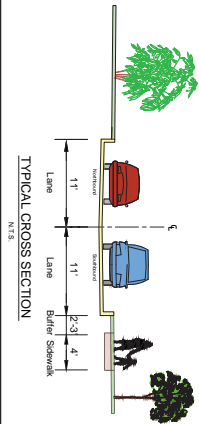
CRANBURY ROAD (CR 615) AREA BICYCLE AND PEDESTRIAN MOBILITY ALTERNATIVES  
TOWNSHIP OF WEST WINDSOR, MERCER COUNTY, NJ

MATCHLINE K-K



MATCHLINE L-L

- LEGEND**
- ROADWAY
  - GRASS/LANDSCAPE
  - SIDEWALK
  - RIGHT-OF-WAY (ROW)
  - STEEP SLOPE 20% OR GREATER



HYBRID ALTERNATIVE			
CRANBURY ROAD (CR 615) AREA BICYCLE AND PEDESTRIAN MOBILITY ALTERNATIVES TOWNSHIP OF WEST WINDSOR, MERCER COUNTY, NJ			
CONTRACT NO.	DATE	SCALE	SHEET NO.
CRANBURY RD	12	12	16

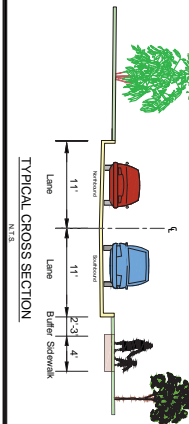
MATCHLINE L-L



MATCHLINE M-M

**LEGEND**

- ROADWAY
- GRASS/LANDSCAPE
- SIDEWALK
- RIGHT-OF-WAY (ROW)
- STEEP SLOPE 20% OR GREATER



0' 20' 40' 80'

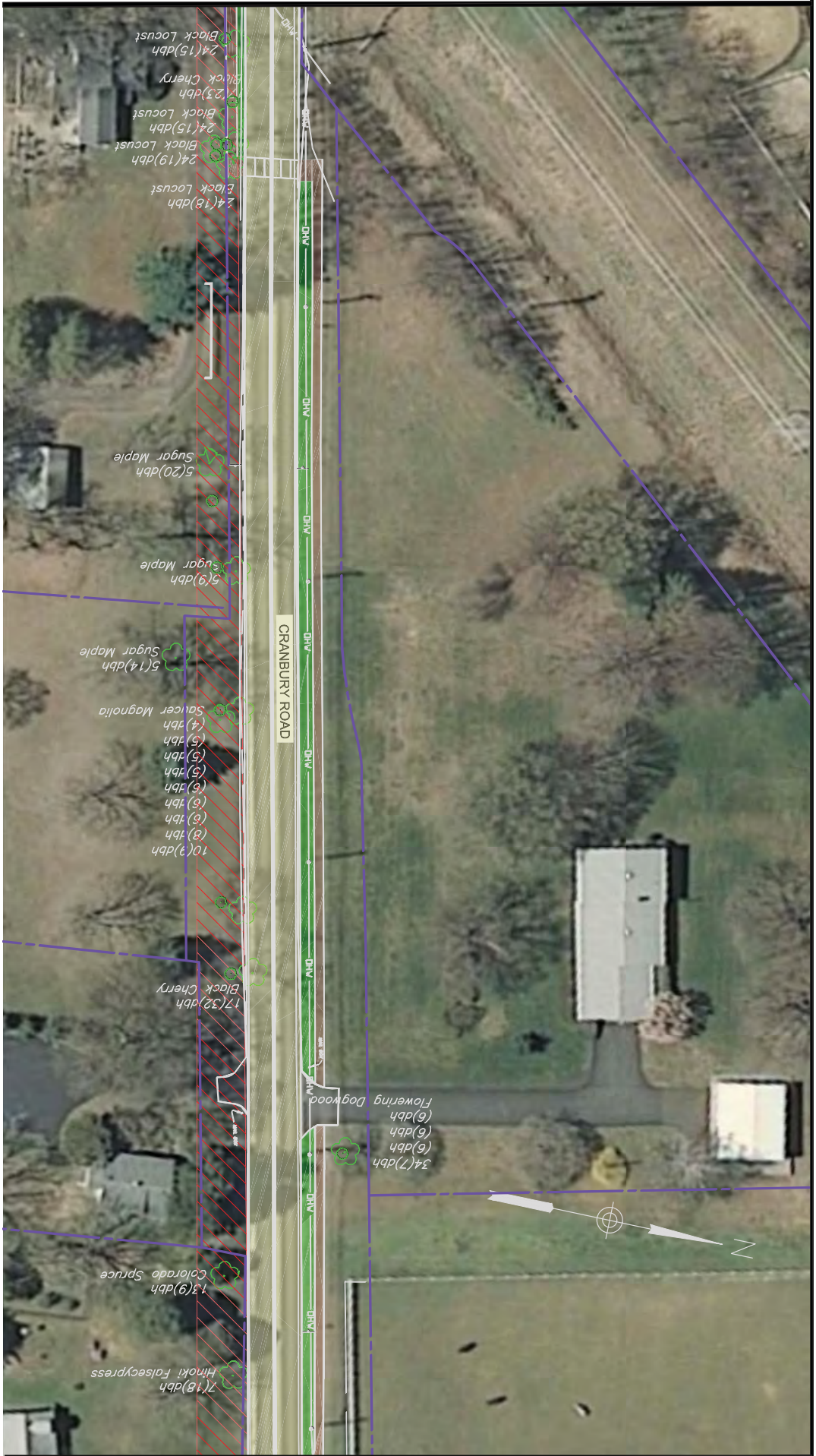


**HYBRID ALTERNATIVE**

CRANBURY ROAD (CR 615) AREA BICYCLE AND PEDESTRIAN MOBILITY ALTERNATIVES  
TOWNSHIP OF WEST WINDSOR, MERCER COUNTY, NJ

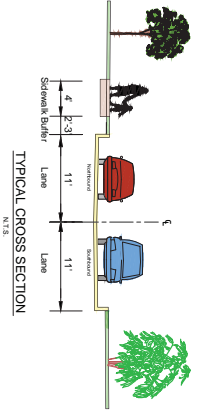
NO. BY	DATE	SCALE	SHEET NO.
CRANBY	1/15/13	AS SHOWN	13
CRANBY	1/15/13	AS SHOWN	16

MATCHLINE M-M



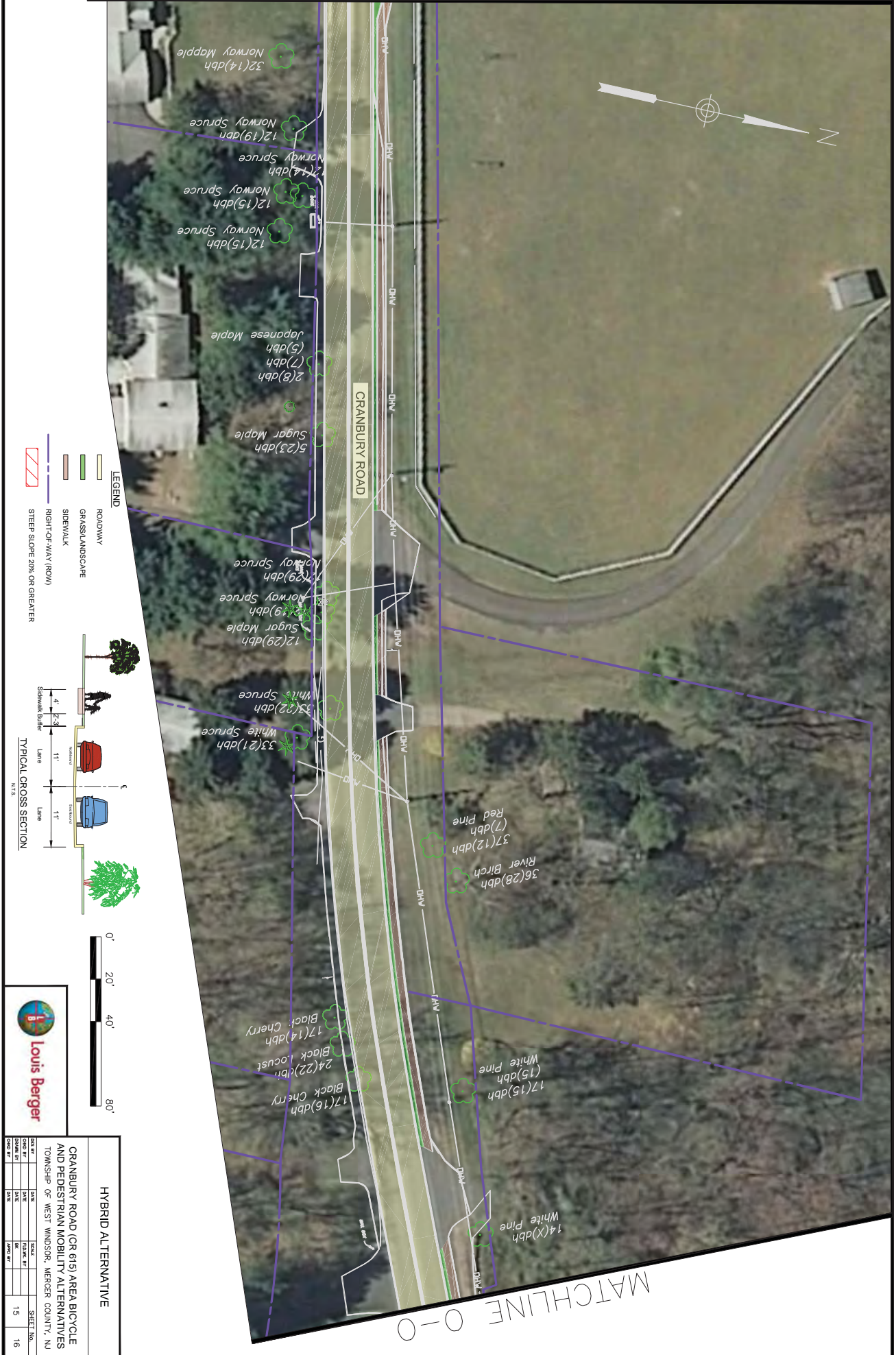
MATCHLINE N-N

- LEGEND**
- ROADWAY
  - GRASSLANDSCAPE
  - SIDEWALK
  - RIGHT-OF-WAY (ROW)
  - STEEP SLOPE 20% OR GREATER



<b>HYBRID ALTERNATIVE</b>			
CRANBURY ROAD (CR 615) AREA BICYCLE AND PEDESTRIAN MOBILITY ALTERNATIVES			
TOWNSHIP OF WEST WINDSOR, MERCER COUNTY, NJ			
DATE	SCALE	SHEET NO.	
10/20/14	AS SHOWN	14	16

MATCHLINE N-N



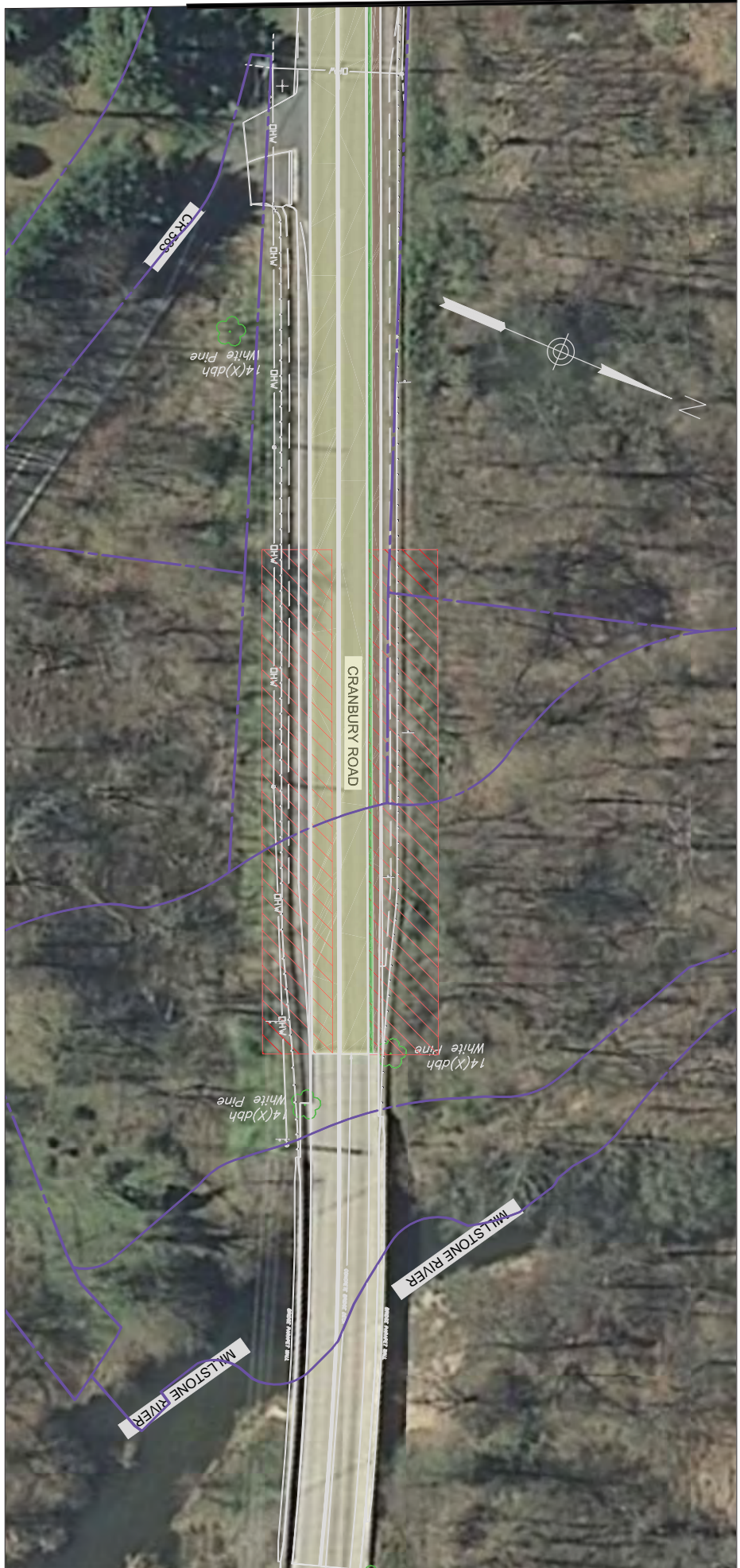
MATCHLINE O-O

**HYBRID ALTERNATIVE**

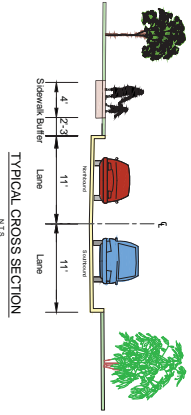
CRANBURY ROAD (CR 615) AREA BICYCLE AND PEDESTRIAN MOBILITY ALTERNATIVES  
TOWNSHIP OF WEST WINSOR, MERCER COUNTY, NJ

CONTRACT NO.	DATE	SCALE	SHEET NO.
CRANBURY	1/15/20	AS SHOWN	15
CRANBURY	1/15/20	AS SHOWN	16

**Louis Berger**



- LEGEND**
-  ROADWAY
  -  GRASS/LANDSCAPE
  -  SIDEWALK
  -  RIGHT-OF-WAY (ROW)
  -  STEEP SLOPE 20% OR GREATER



HYBRID ALTERNATIVE					
CRANBURY ROAD (CR 615) AREA BICYCLE AND PEDESTRIAN MOBILITY ALTERNATIVES					
TOWNSHIP OF WEST WINDSOR, MERCER COUNTY, NJ					
CONTRACT NO.	DATE	SCALE	SHEET NO.	16	16
CRANBURY RD	1/15/15	AS SHOWN	16	16	16