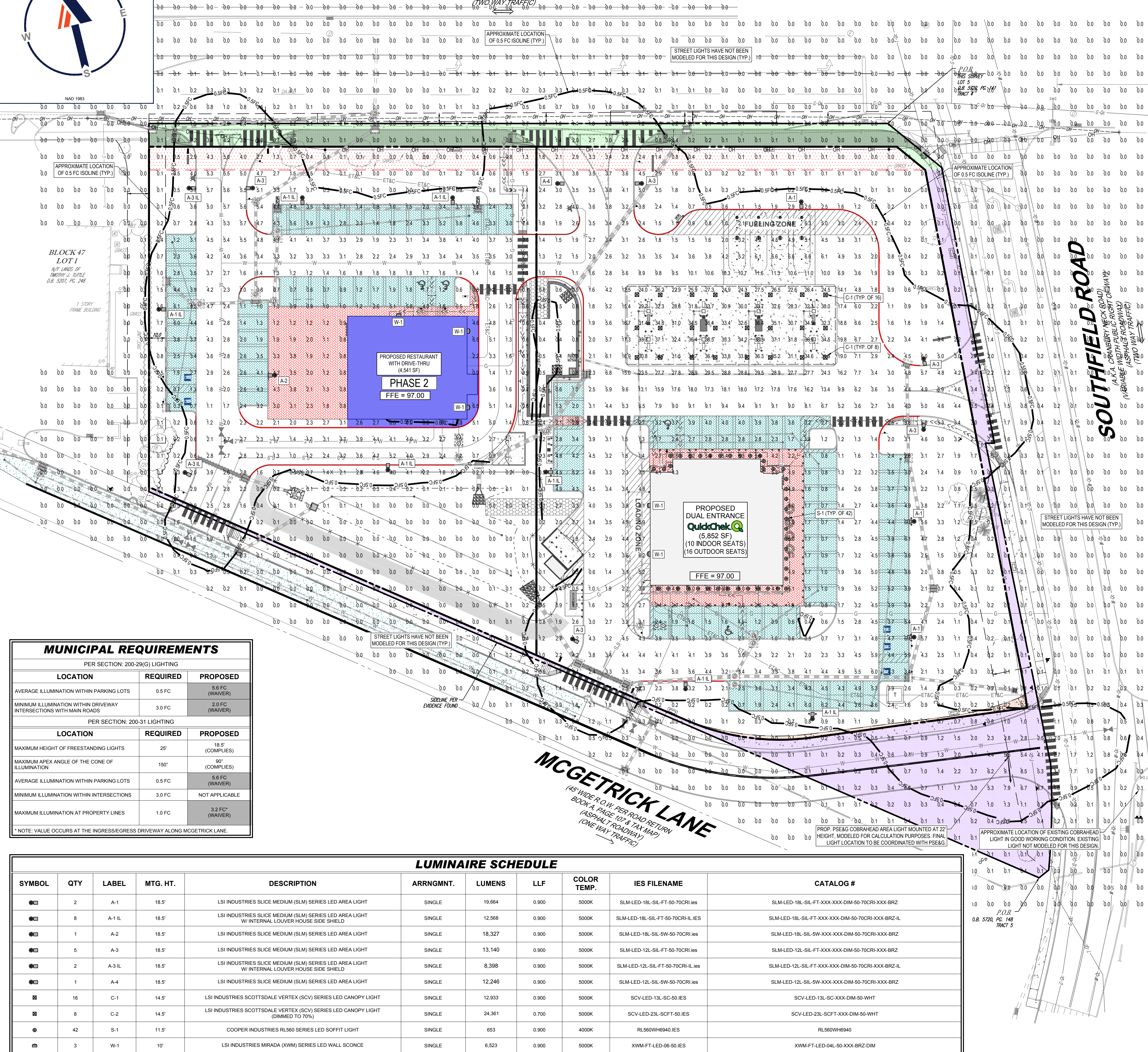


# PRINCETON - HIGHTSTOWN ROAD

(A.K.A. MERCER COUNTY ROUTE #571)  
(70' WIDE PUBLIC RIGHT OF WAY)  
(ASPHALT ROADWAY)  
(TWO-WAY TRAFFIC)



## LIGHTING NOTES

(Rev. 1/2024)

- THE GENERAL NOTES MUST BE INCLUDED AS PART OF THIS ENTIRE DOCUMENT PACKAGE AND ARE PART OF THE CONTRACT DOCUMENTS. THE GENERAL NOTES ARE REFERENCED HEREIN, AND THE CONTRACTOR MUST REFER TO THEM AND FULLY COMPLY WITH THESE NOTES. THE CONTRACTOR MUST BE FAMILIAR WITH AND ACKNOWLEDGE FAMILIARITY WITH ALL OF THE GENERAL NOTES AND ALL OF THE PLANS' SPECIFIC NOTES.
- THE LIGHTING CONTRACTOR MUST COMPLY WITH ALL APPLICABLE CONTRACTOR REQUIREMENTS INDICATED IN THE PLANS, INCLUDING BUT NOT LIMITED TO GENERAL NOTES, GRADING AND UTILITY NOTES, SITE SAFETY, AND ALL AGENCY AND GOVERNMENTAL REGULATIONS.
- THE LIGHTING PLAN DEPICTS PROPOSED, SUSTAINED ILLUMINATION LEVELS CALCULATED USING DATA PROVIDED BY THE NOTED MANUFACTURER. ACTUAL SUSTAINED SITE ILLUMINATION LEVELS AND PERFORMANCE OF LUMINAIRES MAY VARY DUE TO VARIATIONS IN WEATHER, ELECTRICAL VOLTAGE, TOLERANCE IN LAMPS, THE SERVICE LIFE OF EQUIPMENT AND LUMINAIRES AND OTHER RELATED VARIABLE FIELD CONDITIONS.
- THE LIGHTING VALUES AND CALCULATION POINTS DEPICTED ON THIS PLAN ARE ANALYZED ON A HORIZONTAL GEOMETRIC PLANE AT GROUND LEVEL UNLESS OTHERWISE NOTED. ILLUMINATION LEVELS ARE SHOWN IN FOOT-CANDELS (FC).
- THE LUMINAIRE, LAMPS AND LENSES MUST BE REGULARLY INSPECTED/MAINTAINED TO ENSURE THAT THEY FUNCTION PROPERLY. THIS WORK SHOULD INCLUDE, BUT IS NOT LIMITED TO, VISUAL OBSERVATION, CLEANING OF LENSES, AND RELAMPING ACCORDING TO MANUFACTURER RECOMMENDATIONS. FAILURE TO FOLLOW THE ABOVE STEPS COULD RESULT IN IMPROPER LIGHT DISTRIBUTION AND FAILURE TO COMPLY WITH THE APPROVED DESIGN. UPON COMPLETION AND OWNER'S ACCEPTANCE OF THE WORK, THE ABOVE RESPONSIBILITIES BECOMES SOLELY THE OWNER'S.
- THE LIGHTING PLAN IS INTENDED TO SHOW THE LOCATIONS AND TYPES OF LUMINAIRES, POWER SYSTEM, CONDUITS, WIRING AND OTHER ELECTRICAL COMPONENTS ARE SOLELY THE ARCHITECT'S, MECHANICAL ENGINEERS AND/OR LIGHTING CONTRACTOR'S RESPONSIBILITY, AS INSTALLED IN THE CONSTRUCTION CONTRACT DOCUMENTS. THE LIGHTING CONTRACTOR MUST COORDINATE WITH THE PROJECT ARCHITECT AND/OR ELECTRICAL ENGINEER REGARDING ANY AND ALL POWER SOURCES AND TIMING DEVICES NECESSARY TO MEET THE DESIGN INTENT. THESE ITEMS MUST BE INSTALLED AS REQUIRED BY STATE AND LOCAL REGULATIONS. CONTRACTOR IS RESPONSIBLE FOR THE INSTALLATION OF LIGHTING FIXTURES AND APPURTENANCES IN ACCORDANCE WITH ALL APPLICABLE BUILDING AND ELECTRICAL CODES.
- THE CONTRACTOR MUST BRING IMMEDIATELY, IN WRITING, ANY LIGHT LOCATIONS THAT CONFLICT WITH DRAINAGE, UTILITIES, OR OTHER STRUCTURE(S) TO THE ENGINEER OF RECORD'S ATTENTION, PRIOR TO THE COMMENCEMENT OF CONSTRUCTION.
- THE CONTRACTOR IS RESPONSIBLE TO ENSURE THAT SHIELDING AND/OR ROTATED OPTICS ARE INSTALLED AS INDICATED ON THE PLAN IN ORDER TO ACHIEVE THE LIGHTING LEVELS THE REVIEWING AGENCY APPROVED.
- THE ACTUAL LIGHTING LEVELS MUST BE VERIFIED IN THE FIELD AND FIXTURES ADJUSTED ACCORDINGLY, BY THE CONTRACTOR, TO ACHIEVE THE APPROVED LIGHT LEVELS.
- ILLUMINATION LEVELS SHOWN ON THE PLAN HAVE BEEN CALCULATED FOR PROPOSED LIGHTS ONLY. ACTUAL ILLUMINATION LEVELS IN THE FIELD MAY DIFFER FROM THOSE DEPICTED ON THE PLAN DUE TO INTERFERENCE FROM EXISTING AMBIENT LIGHTS WHOSE ILLUMINATION LEVELS ARE NOT REFLECTED ON THIS PLAN.
- ILLUMINATION LEVELS SHOWN ON THE PLAN WERE CALCULATED WITH LIGHTING DESIGN SOFTWARE AG32 BY LIGHTING ANALYST.



### MUNICIPAL REQUIREMENTS

PER SECTION: 200-29(G) LIGHTING

LOCATION	REQUIRED	PROPOSED
AVERAGE ILLUMINATION WITHIN PARKING LOTS	0.5 FC	5.6 FC (WAIVER)
MINIMUM ILLUMINATION WITHIN DRIVEWAY INTERSECTIONS WITH MAIN ROADS	3.0 FC	2.0 FC (WAIVER)

PER SECTION: 200-31 LIGHTING

LOCATION	REQUIRED	PROPOSED
MAXIMUM HEIGHT OF FREESTANDING LIGHTS	25'	18.5' (COMPLIES)
MAXIMUM APEX ANGLE OF THE CONE OF ILLUMINATION	150°	90° (COMPLIES)
AVERAGE ILLUMINATION WITHIN PARKING LOTS	0.5 FC	5.6 FC (WAIVER)
MINIMUM ILLUMINATION WITHIN INTERSECTIONS	3.0 FC	NOT APPLICABLE
MAXIMUM ILLUMINATION AT PROPERTY LINES	1.0 FC	3.2 FC* (WAIVER)

\* NOTE: VALUE OCCURS AT THE INGRESS/EGRESS DRIVEWAY ALONG MCGETRICK LANE.

### LUMINAIRE SCHEDULE

SYMBOL	QTY	LABEL	MTG. HT.	DESCRIPTION	ARRNGMNT.	LUMENS	LLF	COLOR TEMP.	IES FILENAME	CATALOG #
●	2	A-1	18.5'	LSI INDUSTRIES SLICE MEDIUM (SLM) SERIES LED AREA LIGHT	SINGLE	19,664	0.900	5000K	SLM-LED-18L-SIL-FT-XXX-XXX-DIM-50-70CRI-XXX-BRZ	SLM-LED-18L-SIL-FT-XXX-XXX-DIM-50-70CRI-XXX-BRZ
●	8	A-1 IL	18.5'	LSI INDUSTRIES SLICE MEDIUM (SLM) SERIES LED AREA LIGHT W/ INTERNAL LOUVER HOUSE SIDE SHIELD	SINGLE	12,568	0.900	5000K	SLM-LED-18L-SIL-FT-50-70CRI-IL-IES	SLM-LED-18L-SIL-FT-XXX-XXX-DIM-50-70CRI-XXX-BRZ-IL
●	1	A-2	18.5'	LSI INDUSTRIES SLICE MEDIUM (SLM) SERIES LED AREA LIGHT	SINGLE	18,327	0.900	5000K	SLM-LED-18L-SIL-5W-XXX-XXX-DIM-50-70CRI-XXX-BRZ	SLM-LED-18L-SIL-5W-XXX-XXX-DIM-50-70CRI-XXX-BRZ
●	5	A-3	18.5'	LSI INDUSTRIES SLICE MEDIUM (SLM) SERIES LED AREA LIGHT	SINGLE	13,140	0.900	5000K	SLM-LED-12L-SIL-FT-50-70CRI-IES	SLM-LED-12L-SIL-FT-XXX-XXX-DIM-50-70CRI-XXX-BRZ
●	2	A-3 IL	18.5'	LSI INDUSTRIES SLICE MEDIUM (SLM) SERIES LED AREA LIGHT W/ INTERNAL LOUVER HOUSE SIDE SHIELD	SINGLE	8,398	0.900	5000K	SLM-LED-12L-SIL-FT-50-70CRI-IL-IES	SLM-LED-12L-SIL-FT-XXX-XXX-DIM-50-70CRI-XXX-BRZ-IL
●	1	A-4	18.5'	LSI INDUSTRIES SLICE MEDIUM (SLM) SERIES LED AREA LIGHT	SINGLE	12,246	0.900	5000K	SLM-LED-12L-SIL-5W-XXX-XXX-DIM-50-70CRI-XXX-BRZ	SLM-LED-12L-SIL-5W-XXX-XXX-DIM-50-70CRI-XXX-BRZ
■	16	C-1	14.5'	LSI INDUSTRIES SCOTSDALE VERTEX (SCV) SERIES LED CANOPY LIGHT	SINGLE	12,933	0.900	5000K	SCV-LED-13L-SC-XXX-DIM-50-IES	SCV-LED-13L-SC-XXX-DIM-50-WHT
■	8	C-2	14.5'	LSI INDUSTRIES SCOTSDALE VERTEX (SCV) SERIES LED CANOPY LIGHT (DIMMED TO 70%)	SINGLE	24,361	0.700	5000K	SCV-LED-23L-SCFT-50-IES	SCV-LED-23L-SCFT-XXX-DIM-50-WHT
●	42	S-1	11.5'	COOPER INDUSTRIES RL560 SERIES LED SOFFIT LIGHT	SINGLE	653	0.900	4000K	RL560WH6940IES	RL560WH6940
■	3	W-1	10'	LSI INDUSTRIES MIRADA (XWM) SERIES LED WALL SCONCE	SINGLE	6,523	0.900	5000K	XWM-FT-LED-06-50-IES	XWM-FT-LED-04L-50-XXX-BRZ-DIM

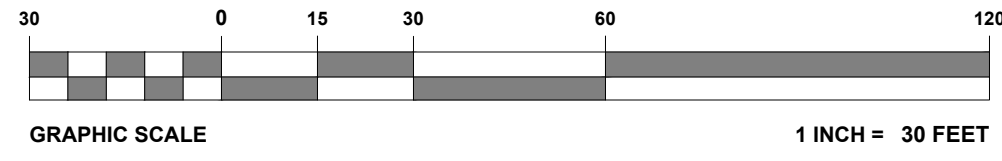
NOTE: EXISTING STREET LIGHTS HAVE NOT BEEN MODELED FOR THIS DESIGN.

**ALL LIGHTS FACING RESIDENTIAL PROPERTIES ARE TO BE DIMMABLE AND ARE TO BE COORDINATED WITH THE TOWNSHIP**

**REFER TO DETAIL SHEET FOR LIGHT POLE FOUNDATION DETAIL**

**THIS PLAN TO BE UTILIZED FOR LIGHTING PURPOSES ONLY**

**REFER TO NOTES AND REFERENCES SHEET FOR ADDITIONAL NOTES, REFERENCES AND SPECIFICATIONS.**



**BOHLER**  
SITE CIVIL AND CONSULTING ENGINEERING  
PROGRAM MANAGEMENT  
LANDSCAPE ARCHITECTURE  
SUSTAINABLE DESIGN  
PERMITTING SERVICES  
TRANSPORTATION SERVICES

### REVISIONS

REV	DATE	COMMENT	DRAWN BY
1	03/09/2022	REV. PER DRCC COMMENTS	CPR
2	12/05/2022	REV. PER TOWNSHIP COMMENTS	TXL
3	02/21/2023	REV. PER TOWNSHIP COMMENTS	CPR
4	04/12/2023	REV. PER TOWNSHIP COMMENTS	MED
5	09/18/2023	REV. PER COUNTY ROW IMPROVEMENTS	TXL
6	11/07/2023	REV. PER TOWNSHIP COMMENTS	MAI
7	01/12/2024	REV. PER TOWNSHIP COMMENTS	KK

**811**  
Know what's below. Call before you dig.  
NEW JERSEY  
YOU MUST CALL 811 BEFORE ANY EXCAVATION WHETHER IT'S ON PRIVATE OR PUBLIC LAND.  
1-800-272-1000  
www.811-nj.com

**ISSUED FOR MUNICIPAL & AGENCY REVIEW & APPROVAL**

PROJECT No.: J190844  
DRAWN BY: CPR  
CHECKED BY: TXL  
DATE: 11/04/2024  
CAD ID: J190844-LGHT-7A

**PRELIMINARY & FINAL MAJOR SITE PLAN & PRELIMINARY & FINAL MAJOR SUBDIVISION PLAN**

FOR  
**ER/UDC WEST WINDSOR LLC**

PROPOSED QUICKCHECK FOOD STORE WITH FUEL SALES AND RESTAURANT WITH DRIVE-THRU  
MAP: 23.03 | BLK: 47 | LOTS: 2-6  
332-340 HIGHTSTOWN ROAD AND 125 SOUTHFIELD ROAD  
TOWNSHIP OF WEST WINDSOR  
MERCER COUNTY, NEW JERSEY

**BOHLER**  
BOHLER ENGINEERING NJ, LLC  
30 INDEPENDENCE BLVD., SUITE 200  
WARREN, NJ 07059  
Phone: (908) 685-6300  
Fax: (908) 724-4401  
www.BohlerEngineering.com  
NJ CERT. OF AUTHORIZATION NO. 24628191700 & M6000122

**T. LAM**  
PROFESSIONAL ENGINEER  
NEW JERSEY LICENSE No. 47863  
NEW YORK LICENSE No. 029242  
CONNECTICUT LICENSE No. 30024  
PENNSYLVANIA LICENSE No. 76748

SHEET TITLE:  
**LIGHTING PLAN**

SHEET NUMBER:  
**C-705**

REVISION 7 - 01/12/2024