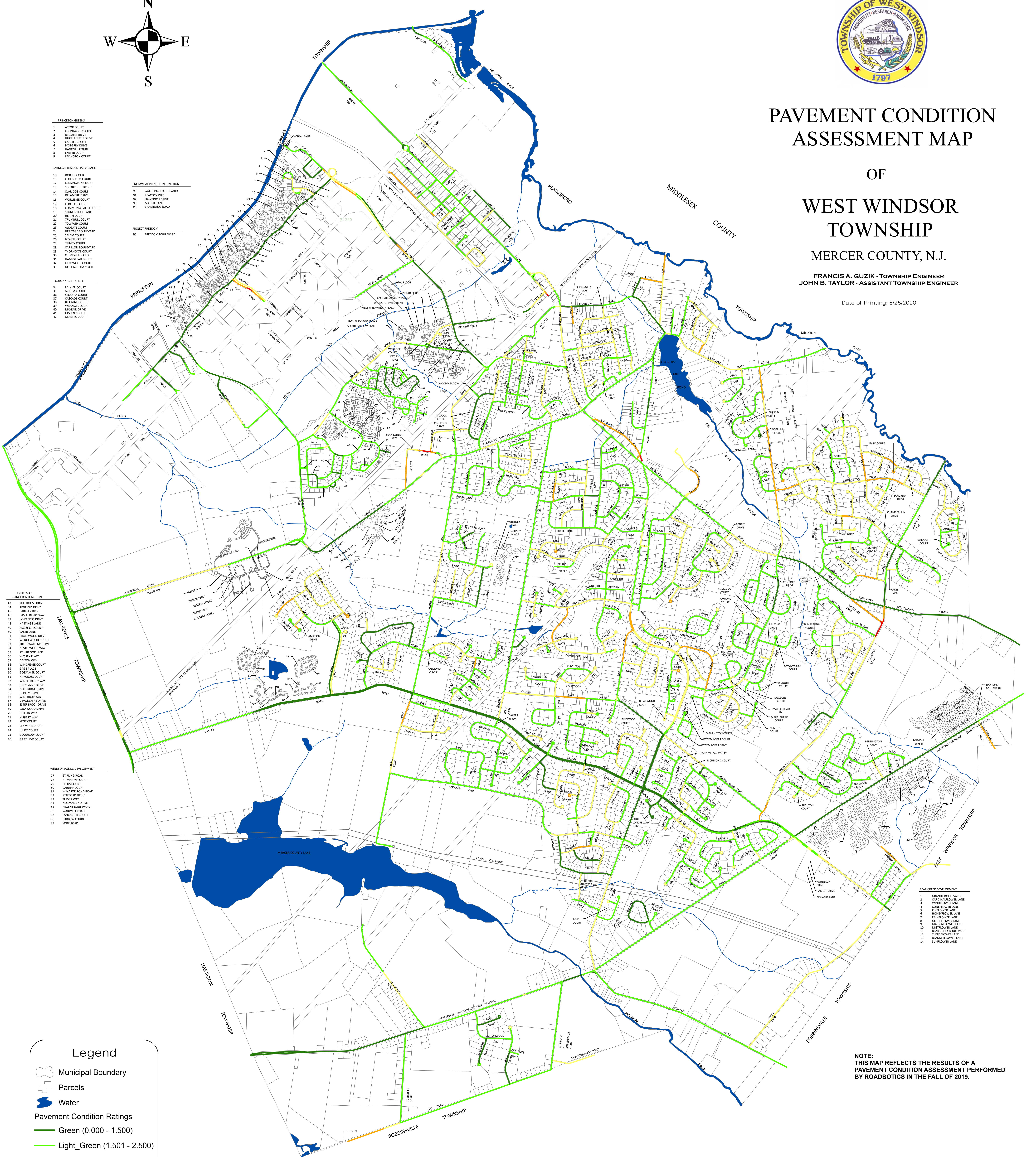


PAVEMENT CONDITION ASSESSMENT MAP

OF WEST WINDSOR TOWNSHIP MERCER COUNTY, N.J.

FRANCIS A. GUZIK - TOWNSHIP ENGINEER
JOHN B. TAYLOR - ASSISTANT TOWNSHIP ENGINEER

Date of Printing: 8/25/2020



- PRINCETON GREENS**
- 1 ASTOR COURT
 - 2 HAZELBROOK COURT
 - 3 BELLAIR DRIVE
 - 4 WICKLIFFE DRIVE
 - 5 CARLETON DRIVE
 - 6 BARKLEY DRIVE
 - 7 HANOVER COURT
 - 8 ELLIOTT COURT
 - 9 LEWINGTON COURT

- CARNEGIE RESIDENTIAL VILLAGE**
- 10 DORSET COURT
 - 11 COLLENDON COURT
 - 12 KENNINGTON COURT
 - 13 NORWICH DRIVE
 - 14 CLARIDGE COURT
 - 15 DELAMERE DRIVE
 - 16 WINDSOR COURT
 - 17 FEDERAL COURT
 - 18 CONSUMERS COURT
 - 19 STONEBROOK LANE
 - 20 HEATH COURT
 - 21 TRUMBULL COURT
 - 22 TOWNSHIRE COURT
 - 23 ALDOTE COURT
 - 24 HERITAGE BOULEVARD
 - 25 SALEM COURT
 - 26 LOWELL COURT
 - 27 TRINITY COURT
 - 28 CARLETON BOULEVARD
 - 29 THORNGATE COURT
 - 30 WINDSOR COURT
 - 31 HAMPSHIRE COURT
 - 32 FREEDOM COURT
 - 33 NOTTINGHAM CIRCLE

- ENGLAVE AT PRINCETON JUNCTION**
- 34 SUMNER COURT
 - 35 AGARAH COURT
 - 36 GASCADIE COURT
 - 37 BUCKINGHAM COURT
 - 38 WINDSOR COURT
 - 39 WINDSOR COURT
 - 40 WINDSOR COURT
 - 41 WINDSOR COURT
 - 42 WINDSOR COURT

- PROJECT FREEDOM**
- 43 FREEDOM BOULEVARD

- COLONIALS DEVELOPMENT**
- 44 SUMNER COURT
 - 45 AGARAH COURT
 - 46 GASCADIE COURT
 - 47 BUCKINGHAM COURT
 - 48 WINDSOR COURT
 - 49 WINDSOR COURT
 - 50 WINDSOR COURT
 - 51 WINDSOR COURT
 - 52 WINDSOR COURT
 - 53 WINDSOR COURT
 - 54 WINDSOR COURT
 - 55 WINDSOR COURT
 - 56 WINDSOR COURT
 - 57 WINDSOR COURT
 - 58 WINDSOR COURT
 - 59 WINDSOR COURT
 - 60 WINDSOR COURT
 - 61 WINDSOR COURT
 - 62 WINDSOR COURT
 - 63 WINDSOR COURT
 - 64 WINDSOR COURT
 - 65 WINDSOR COURT
 - 66 WINDSOR COURT
 - 67 WINDSOR COURT
 - 68 WINDSOR COURT
 - 69 WINDSOR COURT
 - 70 WINDSOR COURT
 - 71 WINDSOR COURT
 - 72 WINDSOR COURT
 - 73 WINDSOR COURT
 - 74 WINDSOR COURT
 - 75 WINDSOR COURT
 - 76 WINDSOR COURT

- DEVELOP AT PRINCETON JUNCTION**
- 77 TOLLHOUSE DRIVE
 - 78 RIVERSIDE DRIVE
 - 79 BARLEY DRIVE
 - 80 CASSELL DRIVE
 - 81 INVERNESS DRIVE
 - 82 HASTINGS LANE
 - 83 ASCOT CHESBENT
 - 84 CARLETON DRIVE
 - 85 CRAFTWOOD DRIVE
 - 86 WINDSOR COURT
 - 87 WINDSOR COURT
 - 88 WINDSOR COURT
 - 89 WINDSOR COURT
 - 90 WINDSOR COURT
 - 91 WINDSOR COURT
 - 92 WINDSOR COURT
 - 93 WINDSOR COURT
 - 94 WINDSOR COURT
 - 95 WINDSOR COURT
 - 96 WINDSOR COURT
 - 97 WINDSOR COURT
 - 98 WINDSOR COURT
 - 99 WINDSOR COURT
 - 100 WINDSOR COURT

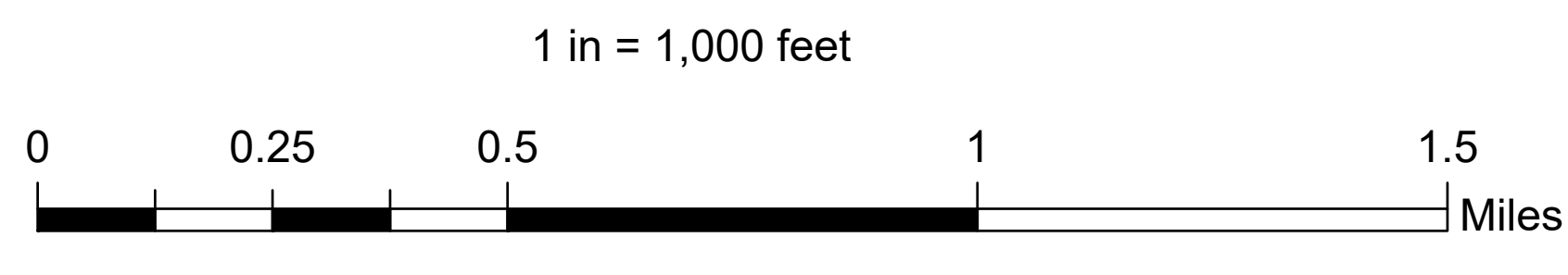
- WINDSOR PONDS DEVELOPMENT**
- 101 STIRLING ROAD
 - 102 HAMPTON COURT
 - 103 LEES COURT
 - 104 GORDON COURT
 - 105 WINDSOR POND ROAD
 - 106 WINDSOR POND ROAD
 - 107 TUCKER WAY
 - 108 WINDSOR DRIVE
 - 109 REGENT BOULEVARD
 - 110 WINDSOR DRIVE
 - 111 LANGCASTER COURT
 - 112 LUDLOW COURT
 - 113 YORK ROAD

- BEAR CREEK DEVELOPMENT**
- 114 GRANDE BOULEVARD
 - 115 CARDINAL CROWN LANE
 - 116 WINDFLOWER LANE
 - 117 WINDFLOWER LANE
 - 118 WINDFLOWER LANE
 - 119 WINDFLOWER LANE
 - 120 WINDFLOWER LANE
 - 121 WINDFLOWER LANE
 - 122 WINDFLOWER LANE
 - 123 WINDFLOWER LANE
 - 124 WINDFLOWER LANE

Legend

- Municipal Boundary
- Parcels
- Water
- Pavement Condition Ratings**
- Green (0.000 - 1.500)
- Light Green (1.501 - 2.500)
- Yellow (2.501 - 3.500)
- Orange (3.501 - 4.500)
- Red (4.501 - 5.000)

NOTE: HIGHER VALUES REPRESENTS POORER ROAD CONDITIONS



NOTE: THIS MAP REFLECTS THE RESULTS OF A PAVEMENT CONDITION ASSESSMENT PERFORMED BY ROADBOTICS IN THE FALL OF 2019.